

Chapman University

Chapman University Digital Commons

Printed Performance Programs (PDF Format)

Music Performances

10-30-2009

Offenbach

Opera Chapman

Follow this and additional works at: https://digitalcommons.chapman.edu/music_programs

Recommended Citation

Opera Chapman, "Offenbach" (2009). *Printed Performance Programs (PDF Format)*. 1385.
https://digitalcommons.chapman.edu/music_programs/1385

This Other Concert or Performance is brought to you for free and open access by the Music Performances at Chapman University Digital Commons. It has been accepted for inclusion in Printed Performance Programs (PDF Format) by an authorized administrator of Chapman University Digital Commons. For more information, please contact laughtin@chapman.edu.



COLLEGE OF
PERFORMING ARTS

ART THEATRE MUSIC DANCE



Fall 2009 Event Highlights

ART:

In Love with Night Sept 8 – Oct 9
Because the Night Oct 19 – Nov 13
BA/BFA Exhibition Nov 16 – Nov 21
Departmental Exhibition Dec 7 – 11

THEATRE:

Lend me a Tenor, by Ken Ludwig Oct 9 – 11; 14 – 17
Streamers, by David Rabe in repertory with
Ladyhouse Blues, by Kevin O'Morrison Nov 13 – 15; 17 – 21

MUSIC:

Chapman Chamber Orchestra with
Guest Artist Vladimir Chernov, baritone Oct 17
Visiting Artist in Piano, Sergei Babayan Oct 27
Opera Chapman presents:
"Offenbach...mais ne jamais ennuyer!" Oct 30, 31 & Nov 1
University Choirs in Concert Nov 20
Chapman University Wind Symphony Nov 21
Holiday Wassail Dec 4 & 5

DANCE:

Fall Dance Concert Dec 9 – 12

For more information about our events,
please visit our website at

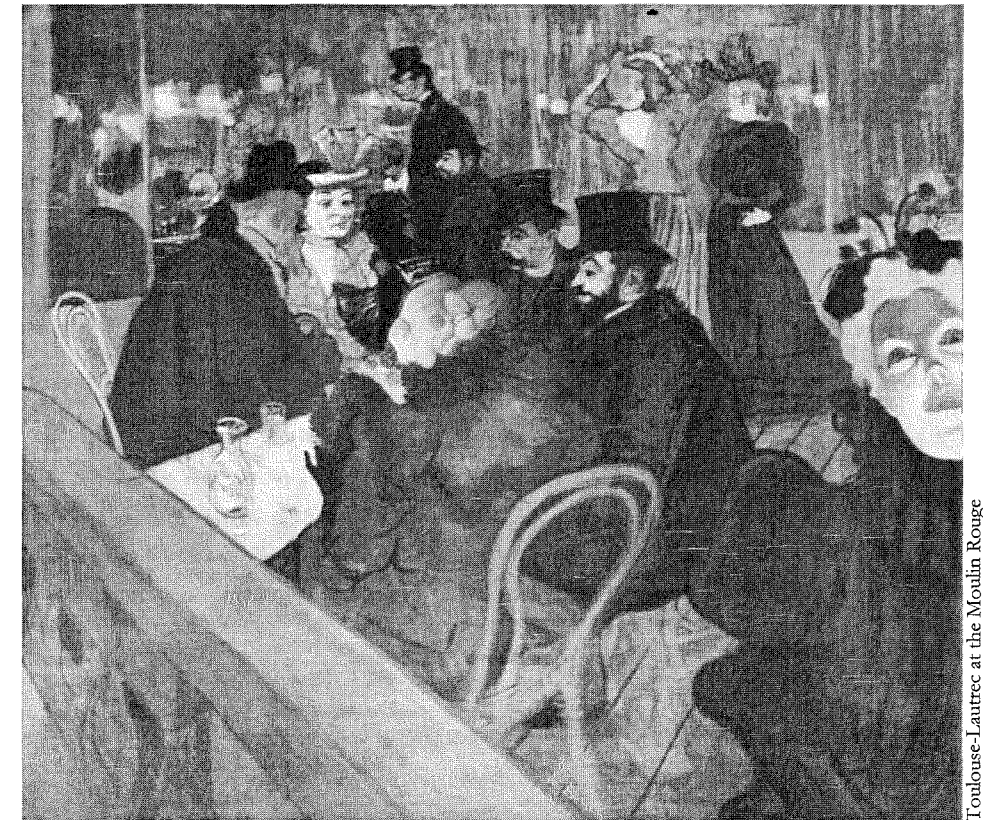
www.chapman.edu/copa/calendar

or call 714-997-6519 or email CoPA@chapman.edu

Opera Chapman

presents

Offenbach...



Toulouse-Lautrec at the Moulin Rouge

...mais ne jamais ennuyer!

October 30 & 31, 2009 at 8pm

November 1, 2009 at 3pm

Salmon Recital Hall
Chapman University Conservatory of Music

Program

<i>Les Contes d’Hoffmann - Prelude</i> featuring Opera Chapman Ensemble	
<i>Orphée aux Enfers - Eurydice Aria</i> Eurydice.....	Katie Ascani (Fri., Sun.) Katie Dixon (Sat.)
<i>Orphée aux Enfers - Violin Duet</i> Eurydice..... Orpheus.....	Katie Ascani (Fri., Sun.) Katie Dixon (Sat.) Timmy Simpson
<i>Les Contes d’Hoffmann & Tale of Kleinsack</i> Nicklausse..... Catherine Brady (Fri., Sun.) Amy Dabalos (Sat.) Hoffmann..... Alfredo Rodriguez (Fri., Sun.) Brett Sprague (Sat.) Nathanael..... Patrick Zubiata (Fri., Sun.) Chris Maze (Sat.) Hermann..... Cesar Ventura (Fri., Sun.) Harrison Zierer (Sat.) featuring Opera Chapman Ensemble	
<i>La Grande Duchesse de Gerolstein - Ah, que j’aimes les militaires</i> La Grande Duchesse.....	Katie Trimble (Fri., Sun.) Rachael Wilson (Sat.)
featuring Chris Maze & Cesar Ventura	
<i>La Belle Hélène - Duet - Oui! C’est un rêve</i> Helene..... Paris.....	Laura Smith (Fri., Sun.) Katie Dixon (Sat.) Timmy Simpson
<i>La Perichole—Chanson des trios cousines</i> Guadalena..... Berginella..... Mastrilla.....	Megan Donoff (Fri., Sun.) Kirsten Wiest (Sat.) Lacey Venanzi (Fri., Sun.) Molly Tomlinson (Sat.) Bethany Bethurum (Fri., Sun.) Amanda Fink (Sat.)
featuring Opera Chapman Ensemble	
<i>La Perichole - Topsy Aria</i> Topsy Aunt.....	Audra Blackner (Fri., Sun.) Katie Trimble (Sat.)
<i>La Perichole - Chanson des trios cousines, Reprise</i> featuring Opera Chapman Ensemble	

Program

<i>~ Intermission ~</i>	
<i>Les Contes d’Hoffmann - Diamond Aria</i> Dr. Miracle.....	Yannick Lambrecht (Fri., Sun.) Efrain Solis (Sat.)
<i>Les Contes d’Hoffmann - Barcarolle</i> Ginlietta..... Nicklausse.....	Clarissa Lecce (Fri., Sun.) Rachel Olson (Sat.) Rachael Wilson (Fri., Sun.) Amy Dabalos (Sat.)
featuring Opera Chapman Ensemble	
<i>Les Contes d’Hoffmann - Elle a fui, la tourterelle!</i> Antonia.....	Katie Ascani (Fri., Sun.) Bethany Ascheri (Sat.)
<i>Les Contes d’Hoffmann - Frantz’s Aria</i> Crespel..... Frantz.....	Cesar Ventura (Fri., Sun.) Harrison Zierer (Sat.) Patrick Zubiata
<i>Les Contes d’Hoffmann - Violin Aria - C’est l’amour</i> Nicklausse.....	Catherine Brady (Fri., Sun.) Amy Dabalos (Sat.)
<i>Les Contes d’Hoffmann - Duet - C’est une chanson d’amour</i> Antonia..... Hoffmann.....	Jessica Hardy (Fri., Sun.) Clarissa Lecce (Sat.) Alfredo Rodriguez (Fri., Sun.) Brett Sprague (Sat.)
<i>Les Contes d’Hoffmann - Trio - Tu ne chanteras plus?</i> Mother..... Antonia..... Dr. Miracle.....	Rachel Olson (Fri., Sun.) Michelle Montoya (Sat.) Jessica Hardy (Fri., Sun.) Clarissa Lecce (Sat.) Harrison Zierer (Fri., Sun.) Efrain Solis (Sat.)
<i>Les Contes d’Hoffmann - Finale</i> Hoffmann.....	Alfredo Rodriguez (Fri., Sun.) Brett Sprague (Sat.)
featuring Opera Chapman Ensemble	

Opera Chapman Ensemble

<i>Katie Ascani</i>	<i>Rachel Olson</i>
<i>Bethany Ascheri</i>	<i>Elisa Perez-Selesky</i>
<i>Brittany Bethurum</i>	<i>Alfredo Rodriguez</i>
<i>Audra Blackner</i>	<i>Timmy Simpson</i>
<i>Catherine Brady</i>	<i>Laura Smith</i>
<i>Amy Dabalos</i>	<i>Efrain Solis</i>
<i>Katie Dixon</i>	<i>Brett Sprague</i>
<i>Megan Donoff</i>	<i>Molly Tomlinson</i>
<i>Amanda Fink</i>	<i>Katie Trimble</i>
<i>Gianna Friedman</i>	<i>Lacey Venanzi</i>
<i>Jessica Hardy</i>	<i>Cesar Ventura</i>
<i>Sarah Horst</i>	<i>Kristian Villalovos</i>
<i>Yannick Lambrecht</i>	<i>Kirsten Wiest</i>
<i>Clarissa Lecce</i>	<i>Rachael Wilson</i>
<i>Chris Maze</i>	<i>Harrison Zierer</i>
<i>Michelle Montoya</i>	<i>Patrick Zubiate</i>

About the Directors

Peter Atherton

Peter Atherton achieved success in his singing career at an early age performing such parts as the title role in *Le nozze di Figaro*, *Colline* in *La Bohème* with San Francisco Opera Touring Division, *Giove* in *La Calisto*, *Seneca* in *The Coronation of Poppea*, *Dr. Miracle* in *Les contes d’Hoffman* with Wolf Trap Opera, *Comte des Grieux* in *Manon*, *Marquis di Calatrava* in *La forza del Destino* and *Colline* with Seattle Opera. He also appeared in Europe singing in concert and oratorio with L’Orchestra de la Suisse Romande, Basel Chamber Orchestra, Bach Cercle Genève and Orchestre de Belgique. Between 1988 and 1990 Atherton was a member of Plácido Domingo’s newly formed Los Angeles Opera.

In 1991 Hal Prince invited him to join *The Phantom of the Opera* where he performed six different roles on Broadway, Los Angeles and Toronto. While in Canada he performed *Dulcamara* in *L’elisir d’amore*, *Leporello* in *Don Giovanni* and *Sarastro* in *The Magic Flute* with Opera Atelier. In 1996 Mr. Atherton was invited to become a Teaching Fellow in the Doctoral Program at UCLA. Opera productions were mounted specifically for him at UCLA. He performed such roles as *Conte Almaviva* in *Le nozze di Figaro*, *Nick Shadow* in *The Rake’s Progress*, *Gianni Schicchi* and *Falstaff*. Dr. Atherton continued his extensive concert career performing with the Los Angeles Philharmonic, San Diego Symphony, Ojai Festival, California Concert Artists, Santa Barbara Master Chorale, Angeles Chorale and the Los Angeles Master Chorale.

In 2002 he was invited to sing the title role in *Don Giovanni* with Operafestival di Roma and Verona. He has continued his relationship with Operafestival also performing *Dulcamara*, *Uberto* in *La serva padrona*, *Sprecher* in *Die Zauberflöte*, *Conte Almaviva* in *Le nozze di Figaro*, *Baron Zeta* in *The Merry Widow*, reprising *Don Giovanni* in 2007 and in 2008 he performed the role of *Sarastro* in *Die Zauberflöte*. Mr. Atherton recently debuted as the *Father* in *Balanchine/Prokofiev Prodigal Son* with Los Angeles Ballet. This summer he has been invited for his eighth consecutive season with Operafestival di Roma where he will direct the main-stage production of *Le nozze di Figaro*.

Carol Neblett

One of America’s greatest and most acclaimed sopranos, Carol Neblett’s career has spanned over forty years, performing opera’s most coveted roles in the world’s greatest opera houses, including the Metropolitan Opera, La Scala, Covent Garden, San Francisco Opera, Salzburg, Hamburg and Chicago Lyric Opera. Ms. Neblett began her career in 1963, at the age of eighteen, as a soloist with the Roger Wagner Chorale, making her professional debut at Carnegie Hall in *Handel’s Solomon*. That same year, Ms. Neblett also appeared as the *Angel* in *Respighi’s Laud to the Nativity* at the Los Angeles Music Center. From 1965 to 1969, under the guidance of impresario Sol Hurok, Ms. Neblett toured the world performing recitals, oratorio and symphonic concerts.

Ms. Neblett made her operatic debut in 1969 with the New York City Opera as *Musetta*, in *La Bohème*. Amidst huge acclaim, she performed over twenty-five leading roles with the company over the next five years. Critical triumphs included the dual roles of *Margherita* and *Helen of Troy* in *Boito’s Mefistofele*. Her performance of *Korngold’s Die Tote Stadt* was so successful that it was subsequently recorded with the renowned *Erich Leinsdorf* conducting, and won a number of coveted awards, including a Grammy in 1975.

Throughout the world’s major opera houses, Ms. Neblett has sung more than eighty-five leading roles and more than 100 oratorio and symphonic works. Her recordings include *Musetta* in *La Bohème* for Angel/EMI, James Levine conducting; *Minnie* in *La Fanciulla del West* with Plácido Domingo and Sherrill Milnes, Zubin Mehta conducting (DG); *Marietta* in *Korngold’s Die Tote Stadt*, *Erich Leinsdorf* conducting (RCA); Mahler’s *Symphony No. 2* with Claudio Abbado and the Chicago Symphony Orchestra; and a special recording with Roger Wagner on Angel/EMI entitled *Magnificat*.

Ms. Neblett is currently on the vocal staff as Artist-in-Residence at Chapman University.

Artistic Staff

Peter Atherton..... Artistic Director
Carol Neblett..... Associate Artistic Director
Laure Dike..... Costume Design

Cheryl Lin Fielding.....Musical Direction
Janet KaoMusical Direction
Tony Cho.....Musical Direction
Tanya DorseyViolin

Jennifer KellyStage Management & Program Design
Alex Cammarota..... Assistant Stage Manager

Costume Crew
Audra Blackner, Catherine Brady, Amy Dabalos, Sarah Horst, Kelly Rogers & Molly Tomlinson

Publicity Crew
Opera Chapman Ensemble

Stage Crew
Brittany Bethurum, Yannick Lambrecht, Chris Maze, Rachel Olson, Alfredo Rodriguez, & Timmy Simpson

Special Thanks
Don Guy, Ron Coffman, Richard Jackson

Acknowledgments

William D. Hall.....Dean, College of Performing Arts
Dale A. MerrillAssociate Dean, College of Performing Arts
Rick Christophersen Director, Conservatory of Music
Margaret DehningChair, Conservatory of Music
Don GuyProduction Manager, College of Performing Arts
Pat Cavins Costume Shop Manager, College of Performing Arts
Judith Long..... Secretary, Conservatory of Music
Stephany ElliottSecretary to the Dean, College of Performing Arts
Peter Westenhofer..... Conservatory Operations Supervisor

Conservatory Voice Faculty:
Christina Alexopoulos, David Alt, Peter Atherton, Pamela Blanc, Christina Dahlin, Margaret Dehning, Kristina Driskill, Patricia Gee, Patrick Goesser, Milena Kitic—Artist-in-Residence, Jonathan Mack, Susan Montgomery, Bruce McClurg, Carol Neblett—Artist-in-Residence

Keyboard Collaborative Arts Faculty:
Louise Thomas—Director, Clara Cheng, Tony Cho, Cheryl Lin Fielding, Lisa Kaminaga, Janet Kao, Hye Young Kim, Beverly Min

MARK YOUR CALENDARS...

Opera Chapman & Chapman Chamber Orchestra
present



April 23, 24 & 25, 2010
Chapman Auditorium, Memorial Hall

Upcoming Events

Chapman Percussion Ensemble Nicholas Terry, Director	November 12—8:00pm Chapman Auditorium, Memorial Hall
Chapman Saxophone Ensemble Gary Matsuura, Director	November 18—8:00pm Salmon Recital Hall, Conservatory of Music
Modern Music Concert Jeffrey Holmes, Director	November 19—8:00pm Salmon Recital Hall, Conservatory of Music
University Choirs in Concert Stephen Coker and Keith Hancock, Conductors	November 20—8:00pm Merle and Marjorie Fish Interfaith Center
Chapman Wind Symphony Paul Sherman, Music Director & Conductor	November 21—8:00pm Salmon Recital Hall, Conservatory of Music
Faculty Recital Cheryl Fielding, Piano	November 22—5:00pm Salmon Recital Hall, Conservatory of Music
Chapman Guitar Ensemble Jeff Cogan, Director	November 22—8:00pm Salmon Recital Hall, Conservatory of Music
Jazz Combos & Big Band Albert Alva, Director	December 1—8:00pm Chapman Auditorium, Memorial Hall
46th Annual Holiday Wassail Banquet & Concert Daniel Alfred Wachs, Stephen Coker and Keith Hancock, Conductors	December 4 & 5—6:00pm George Bush Conference Center, Beckman Hall Merle and Marjorie Fish Interfaith Center
Piano Major Showcase Recital Grace Fong, Director	December 8—7:00pm Salmon Recital Hall, Conservatory of Music
Student Pianists in Recital Janice Park, Director	December 9—7:00pm & 8:30pm Salmon Recital Hall, Conservatory of Music
New Music Ensemble Sean Heim, Director	December 10—8:00pm Salmon Recital Hall, Conservatory of Music
Instrumental Chamber Music Grace Fong and Robert Becker, Directors	December 12—2:00pm (Strings & Piano) 5:00 pm (Winds & Brass) Salmon Recital Hall, Conservatory of Music
Orange County Youth Symphony Orchestra Concert Daniel Alfred Wachs, Music Director & Conductor	December 13—4:00pm Chapman Auditorium, Memorial Hall

*For more information about events in the College of Performing Arts,
see our website: <http://www.chapman.edu/copa/calendar>*

CELEBRATE the creative and intellectual promise of today's rising stars by supporting the Chapman University College of Performing Arts. Your tax deductible donation underwrites award-winning programs and performances. Also, your employer may be interested in the visibility gained by underwriting programs and performances within the College of Performing Arts.

For more information about supporting our future stars and programs, contact Kevin Cartwright, Director of Development for the College of Performing Arts at 714-289-2085.