

Chapman University

## Chapman University Digital Commons

---

Printed Performance Programs (PDF Format)

Music Performances

---

2002

### School of Music

Follow this and additional works at: [https://digitalcommons.chapman.edu/music\\_programs](https://digitalcommons.chapman.edu/music_programs)

---

#### Recommended Citation

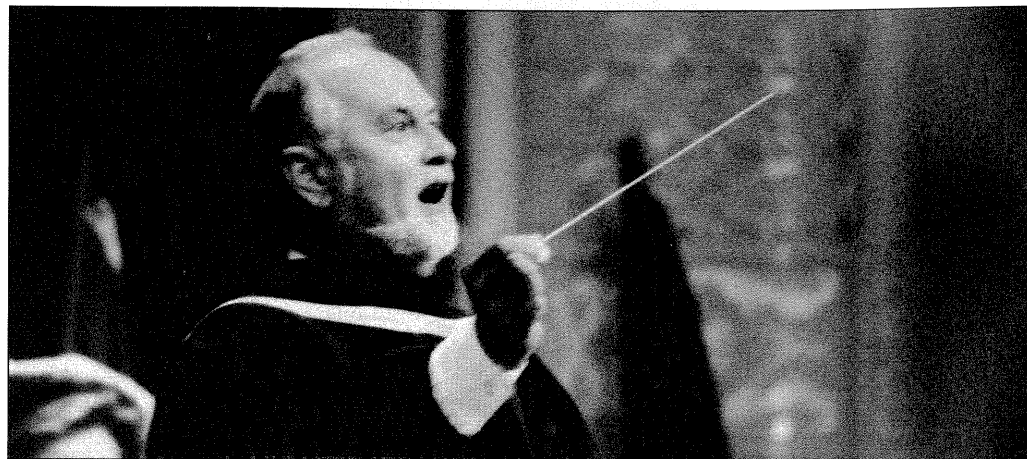
"School of Music" (2002). *Printed Performance Programs (PDF Format)*. 1083.  
[https://digitalcommons.chapman.edu/music\\_programs/1083](https://digitalcommons.chapman.edu/music_programs/1083)

This Other Concert or Performance is brought to you for free and open access by the Music Performances at Chapman University Digital Commons. It has been accepted for inclusion in Printed Performance Programs (PDF Format) by an authorized administrator of Chapman University Digital Commons. For more information, please contact [laughtin@chapman.edu](mailto:laughtin@chapman.edu).

 **CHAPMAN**  
UNIVERSITY  
ONE UNIVERSITY DRIVE  
ORANGE, CALIFORNIA 92866

Non-Profit Organization  
U.S. POSTAGE  
**PAID**  
Orange, California  
Permit No. 58





Dear Music Lover,

Welcome to the 2002-2003 Concert Season of the Chapman University School of Music. I would like to take this opportunity to extend an invitation to you, your family and friends to become an integral part of the Chapman music community by attending and supporting our many outstanding musical offerings. This season promises to be one of the most exciting ever! Highlights include the University Choir joining with the William Hall Master Chorale, University Alumni Choir and Orchestra in a performance of Verdi's *Requiem*, the Chapman Chamber Orchestra and choral ensembles performing at the Annual Holiday Wassail and the Sholund Scholarship Concert performance of Beethoven's "*Missa Solemnis*," featuring the Chapman Symphony and University Choirs. In addition to the exceptional student musicians who comprise our many ensembles, we are proud to present our renowned music faculty in recitals throughout the year in Salmon Recital Hall.

Catch the Chapman Spirit – come, enjoy the many excellent musical offerings of the Chapman University School of Music!

*Wm D. Hall*

William D. Hall, *Dean*

For advance ticket sales of School of Music events, please call the Chapman University Ticket Office at (714) 997-6812.



*Featuring the Choirs and Chamber Orchestra of Chapman University*

FRIDAY, DECEMBER 6  
SATURDAY, DECEMBER 7  
6 P.M.

Enjoy traditional Wassail drink; follow a garden path lighted with luminaries as strolling minstrels amuse you; dine on delectable holiday fare as serenading servants entertain you; be charmed by a concert of seasonal music presented by the University Choir and University Singers, William Hall, Conductor, University Women's Chorus, Joseph Modica, Conductor and the Chapman University Chamber Orchestra, John Koshak, Conductor.

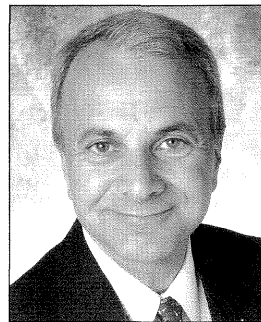
Wassail • Dinner • Concert  
\$50

# Chapman Symphony Orchestra

49th season



John Koshak



James Doti

*Chapman University celebrates John Koshak's 32-year legacy of musical and educational leadership. Join the Chapman Orchestras and Professor Koshak in his finale season at Chapman University.*

John Koshak, Music Director and Conductor

**SATURDAY, NOVEMBER 23 • 8 P.M.**

**Williams:** *Olympic Theme and Fanfare*

**Bernstein:** *Slava! A Political Overture*

**Bernstein:** *Symphonic Dances From "West Side Story"*

**Beethoven:** *Symphony No. 5 in C Minor, op. 67*

**SATURDAY, MAY 4 • 8 P.M.**

William Hall and John Koshak, Conductors

**Annual Sholund Scholarship Concert**

Beethoven: *Overture to "Egmont"*

Beethoven: *Mass in D "Missa Solemnis"*

Chapman Auditorium

General Admission \$10 • Students and Seniors \$5

Chapman Community and Children Under 12 Free

*Please call for program and ticket information:*

*(714) 997-6914.*

**SATURDAY, APRIL 5 • 7 P.M.**

**"Celebration Concert and Reception"**

President James Doti, narrator of *Lincoln Portrait*

**Arnold:** *Scottish Dances*

**Barber:** *Adagio for Strings*

**Copland:** *Lincoln Portrait*

**Tchaikovsky:** *Symphony No. 3 in D Major, The "Polish"*

**President's Reception Immediately  
Following the Concert**

Alumni & friends are invited to join with Chapman University, the School of Music, Chapman Music Associates and the University Orchestras in a **"Celebration Reception"** honoring Professor John Koshak, following the April 5 concert in Beckman Hall.

# Chapman University Chamber Orchestra

32nd season



Chamber orchestra, Vienna Konzerthaus, January 2000

John Koshak, Music Director and Conductor

**SATURDAY, NOVEMBER 9 • 8 P.M.**

Junko Hayashi, violin

**Mozart:** *Overture to "The Marriage of Figaro"*

**Prokofiev:** *Violin Concerto No. 1*

**Ravel:** *Mother Goose Suite*

**Bartók:** *Dances of Transylvania*

**Mozart:** *Symphony No. 35, The "Haffner"*

**FRIDAY, DECEMBER 6 & 7 • 6 P.M.**

**Annual Holiday Wassail**

Anna Komandyan & Johanna Kroesen, violin

Justin Dubish, cello

**Strauss:** *Overture to "Die Fledermaus"*

**Corelli:** *Christmas Concerto Grosso, op. 6, no. 8*

**Morden:** *Pennsylvania Polka*

**Dragon:** *Jingle Bells*

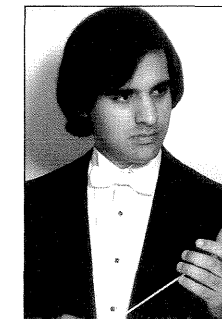
**Strauss:** *Radetzky March*



James Lee



David Whitehill



Aaron Valdizán

**FRIDAY, MARCH 7 • 8 P.M.**

Aaron Valdizán & David Whitehill, student guest conductors • Katie Andersen, cello • David Vokoun, bass

**SATURDAY, MARCH 8 • 8 P.M.**

James Lee, student guest conductor • Katie Andersen, cello  
David Vokoun, bass

**Stravinsky:** *Suite No. 1 for Orchestra*

**Elgar:** *Cello Concerto in E Minor*

**Koussevitzky:** *Concerto for Bass*

**Nicolai:** *Overture to the "Merry Wives of Windsor"*

**Mozart:** *Symphony No. 25*

**SUNDAY, APRIL 27 • 4 P.M.**

Maralynne Mann, oboe • Kelly Park, piano

**Schubert:** *Overture to "Rosamunde"*

**Green:** *Threnody (premiere performance)*

**Lutoslawski:** *Little Suite*

**Grieg:** *Piano Concerto in A Minor*

**Beethoven:** *Symphony No. 1 in C Major*

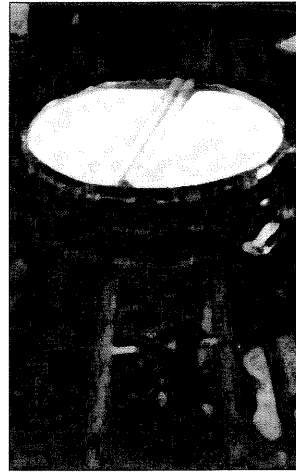
Chapman Auditorium

General Admission \$10 • Students and Seniors \$5

Chapman Community and Children Under 12 Free



## Chamber Music at Chapman



TUESDAY, NOVEMBER 19 • 8 P.M.  
TUESDAY, APRIL 22 • 8 P.M.

*Chapman Percussion Ensemble*  
Robert Slack, *Director*

OCTOBER 18 • 8 P.M.  
MARCH 28 • 8 P.M.

*Chamber Music of the 20th Century*  
Michael Martin, *Director*

NOVEMBER 24 • 8 P.M.  
APRIL 26 • 8 P.M.

*Chapman Guitar Ensemble*  
Jeffrey Cogan, *Director*

DECEMBER 3 • 8 P.M.  
MAY 6 • 8 P.M.

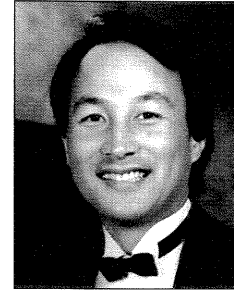
*Chapman Jazz Ensemble*  
Gary Matsuura, *Director*

NOVEMBER 17 • 8 P.M.  
APRIL 8 • 8 P.M.

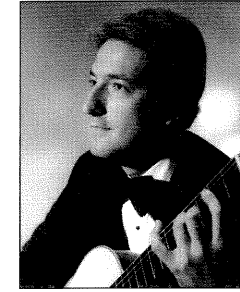
*Instrumental Chamber Music*  
John Koshak, *Director*

Salmon Recital Hall  
Free Admission

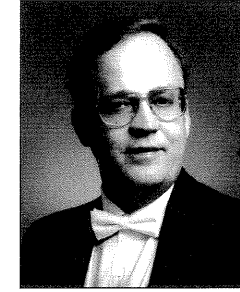
## Faculty Recital Series



*Gary Matsuura*



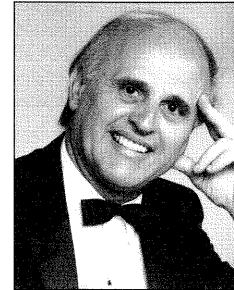
*Jeffrey Cogan*



*Joseph Matthews*



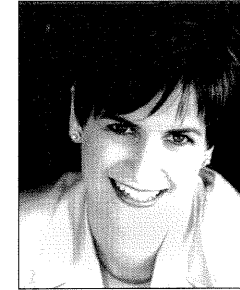
*Karen Scoville*



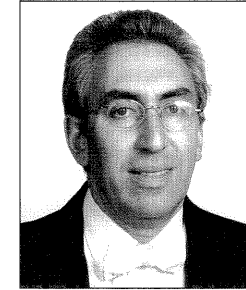
*Laszlo Lak*



*Michael Martin*



*Louise Thomas*



*Misha Lefkowitz*

FRIDAY, SEPTEMBER 27 • 8 P.M.

*Louise Thomas, Piano*

SUNDAY, NOVEMBER 10 • 8 P.M.

*Jeffrey Cogan, Guitar; Gary Matsuura, Saxophone*

SATURDAY, FEBRUARY 8 • 8 P.M.

*Michael Martin, Piano*

SUNDAY, FEBRUARY 16 • 2 P.M.

*Joseph Matthews, Piano; Karen Scoville, Piano*

SUNDAY, MARCH 9 • 8 P.M.

*Misha Lefkowitz, Violin*

FRIDAY, MARCH 21 • 8 P.M.

*Laszlo Lak, Piano*

Salmon Recital Hall  
General Admission \$10 • Students and Seniors \$5  
Chapman Community and Children Under 12 Free



**William Hall, Margaret Dehning and Joseph Modica,**  
*Directors*

**Louise Thomas,** *Accompanist*

**SUNDAY, OCTOBER 6 • 7:30 P.M.**

***Verdi Requiem***

*Orange County Performing Arts Center\**

*\*Tickets for the Verdi Requiem may be purchased by  
contacting Ticketmaster or the OC box office at 714/740-7878.*

**FRIDAY, NOVEMBER 22 • 8 P.M.**

***Fall Chorale Concert***

*Red Hill Lutheran Church*

**FRIDAY, FEBRUARY 7 • 8 P.M.**

***Annual Post Tour Concert***

*Chapman Auditorium*

**SUNDAY, APRIL 6 • 4 P.M.**

***Spring Concert featuring the University Singers***

*Salmon Recital Hall*

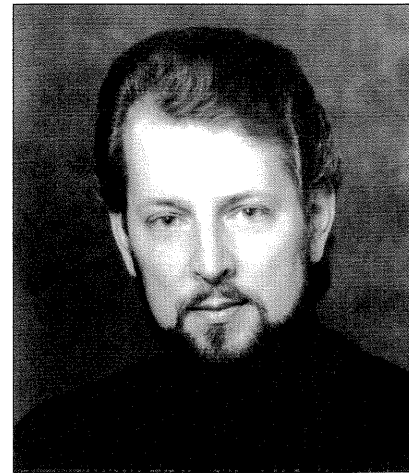
**SATURDAY, MAY 3 • 4 P.M.**

***Annual Sholund Scholarship Concert***

*Chapman Auditorium*

*Beethoven: Mass in D "Missa Solemnis"*

General Admission \$10 • Students and Seniors \$5  
Chapman Community and Children Under 12 Free



**Peter Atherton,** *Director*

Each semester Opera Chapman presents scenes, acts, and full productions by the world's most renowned opera composers. Past presentations have included *Carmen*, *Don Pasquale*, *Romeo and Julliete*, *Cosi Fan Tutti* and *The Magic Flute*. This is your opportunity to hear the next generation of operatic talent. Opera Chapman alumni are now gracing the world's stages at the Met, the Staatsoper of Berlin, the Staatsoper of Vienna, Covent Garden in London, and Los Angeles Music Center Opera.



**FRIDAY, OCTOBER 25 • 8 P.M.**

**SATURDAY, OCTOBER 26 • 8 P.M.**

***2002: An Opera Odyssey: The Journey Continues***

***Selected Opera Scenes, Arias and Duets***

*Salmon Recital Hall*

**FRIDAY, APRIL 25 • 8 P.M.**

**SATURDAY, APRIL 26 • 8 P.M.**

***The Final Acts***

***Selected Opera Scenes, Arias and Duets***

*Chapman Auditorium*

General Admission \$10 • Students and Seniors \$5  
Chapman Community and Children Under 12 Free