

Chapman University

Chapman University Digital Commons

Printed Performance Programs (PDF Format)

Music Performances

11-9-2008

Music Therapy Student Showcase

Follow this and additional works at: https://digitalcommons.chapman.edu/music_programs



Part of the [Music Performance Commons](#), and the [Other Music Commons](#)

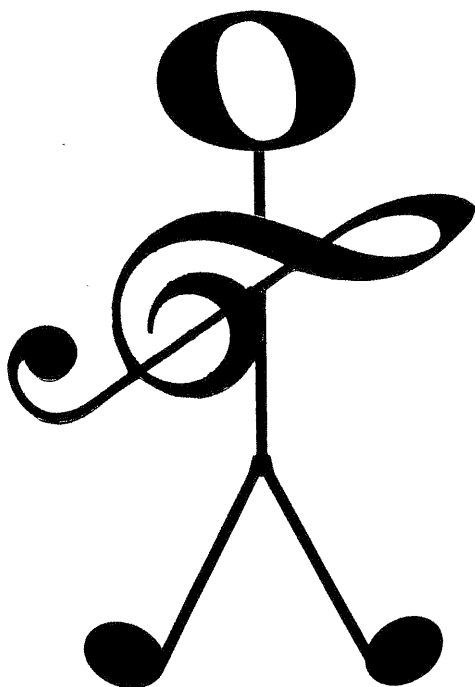
Recommended Citation

"Music Therapy Student Showcase" (2008). *Printed Performance Programs (PDF Format)*. 530.
https://digitalcommons.chapman.edu/music_programs/530

This Student Recital is brought to you for free and open access by the Music Performances at Chapman University Digital Commons. It has been accepted for inclusion in Printed Performance Programs (PDF Format) by an authorized administrator of Chapman University Digital Commons. For more information, please contact laughtin@chapman.edu.

*Chapman University
Presents*

Music Therapy



Student Showcase

Grace Kim, accompaniment

*Salmon Recital Hall
Sunday, November 9, 2008
8PM*

Program

Tara O'Brien, Piano

Encapsulate (and Never Let Go)

Tara O'Brian

Christine DeCoup-Crank, Soprano

Deh vieni, non tardar

Mozart

Stephanie Ignattius, Guitar

Un Día de Noviembre

Leo Brouwer

Faith Kriewall, Soprano

Into the West

Anni Lennox

Holly Reynolds, Flute

Orientale

Boisdeffre

Allie McNay, Soprano

Three Little Words

Allie McNay

Pretty For You

Allie McNay

Amy Kurtzweil, Mezzo; Patrick Shiroishi, Drums;

Joe Zamudio, Piano

Honeysuckle Rose

Andy Razat, Thomas Waller

~ Intermission ~

Improvisation

Music Therapy Students

Jonathan Chaffin, Tenor

The Salley Gardens

Britten

Esther Yim, Cello

Cello Concerto in B minor

Vivaldi

Amy Kurtzweil, Mezzo

I Carry Your Heart

John Duke

Poem by E.E. Cummings

Patrick Shiroishi, Guitar

Sakura

Toru Takemitsu

Holly Reynolds, Soprano

God Help the Outcasts

Alan Menken

Grace Kim, Piano

Ballade No.2 in F Major

Chopin

Music Therapy Students

Children of the World

Bee Gees

Arr. Jacob Vogel

Thank you all so much for coming!
Have a wonderful night!!!

***Chapman University
Music Therapy Students
2008-2009:***

*Jonathan Chaffin
Christine DeCoup-Crank
Becky Human*
Stephanie Ignatius
Jeehyun "Gloria" Jeon
Grace Kim
Faith Kriewall
Amy Kurtzweil
Allie McNay
Brea Murakami
Tara O'Brien
Madison Palmer
Brianna Peckham
Cathy Powers
Holly Reynolds
Patrick Shiroishi
Kari Villarreal
Esther Yim
Joe Zamudio**

** Current Interns*

Music Therapy Faculty:

*Dr. David Wolfe, RMT, MT-BC, Acting Director
Cathy O'Neil, MT-BC
Dr. Mary DiCamillo, EdD, MT-BC*

Thank you to all of our friends, peers and professors who have supported us and the Music Therapy program. We cannot begin to express how much you mean to all of us. Shakespeare knew what he was talking about when he said, "If music be the food of Love, play on."