

2013

The Classical Limit Of Quantum Optics: Not What It Seems At First Sight

Yakir Aharonov

Chapman University, aharonov@chapman.edu

Alonso Botero

Universidad de Los Andes - Colombia

Shmuel Nussinov

Tel Aviv University

Sandu Popescu

University of Bristol

Jeff Tollaksen

Chapman University, tollakse@chapman.edu

See next page for additional authors

Follow this and additional works at: http://digitalcommons.chapman.edu/scs_articles



Part of the [Atomic, Molecular and Optical Physics Commons](#), and the [Quantum Physics Commons](#)

Recommended Citation

Aharonov, Yakir, Alonso Botero, Shmuel Nussinov, Sandu Popescu, Jeff Tollaksen, and Lev Vaidman. "The classical limit of quantum optics: not what it seems at first sight." *New Journal of Physics* doi: 10.1088/1367-2630/15/9/093006

This Article is brought to you for free and open access by the Science and Technology Faculty Articles and Research at Chapman University Digital Commons. It has been accepted for inclusion in Mathematics, Physics, and Computer Science Faculty Articles and Research by an authorized administrator of Chapman University Digital Commons. For more information, please contact laughtin@chapman.edu.

The Classical Limit Of Quantum Optics: Not What It Seems At First Sight

Comments

This article was originally published in *New Journal of Physics*, volume 15, issue 9, in 2013. DOI: [10.1088/1367-2630/15/9/093006](https://doi.org/10.1088/1367-2630/15/9/093006)

Creative Commons License



This work is licensed under a [Creative Commons Attribution 3.0 License](https://creativecommons.org/licenses/by/3.0/).

Copyright

IOP Publishing Ltd and Deutsche Physikalische Gesellschaft

Authors

Yakir Aharonov, Alonso Botero, Shmuel Nussinov, Sandu Popescu, Jeff Tollaksen, and Lev Vaidman

The classical limit of quantum optics: not what it seems at first sight

This content has been downloaded from IOPscience. Please scroll down to see the full text.

2013 New J. Phys. 15 093006

(<http://iopscience.iop.org/1367-2630/15/9/093006>)

View [the table of contents for this issue](#), or go to the [journal homepage](#) for more

Download details:

IP Address: 206.211.139.182

This content was downloaded on 13/11/2014 at 22:28

Please note that [terms and conditions apply](#).

The classical limit of quantum optics: not what it seems at first sight

Yakir Aharonov^{1,2}, Alonso Botero³, Shmuel Nussinov¹, Sandu Popescu^{4,5}, Jeff Tollaksen² and Lev Vaidman^{1,2}

¹ School of Physics and Astronomy, Tel Aviv University, Tel Aviv, Israel

² Institute of Quantum Studies and Faculty of Physics, Chapman University, 1 University Drive, Orange, CA 92866, USA

³ Departamento de Fisica, Universidad de Los Andes, Bogotá, Colombia

⁴ H H Wills Physics Laboratory, University of Bristol, Tyndall Avenue, Bristol BS8 1TL, UK

E-mail: S.popescu@bristol.ac.uk

New Journal of Physics **15** (2013) 093006 (7pp)

Received 1 May 2013

Published 3 September 2013

Online at <http://www.njp.org/>

doi:10.1088/1367-2630/15/9/093006

Abstract. What light is and how to describe it has always been a central subject in physics. As our understanding has increased, so have our theories changed: geometrical optics, wave optics and quantum optics are increasingly sophisticated descriptions, each referring to a larger class of phenomena than its predecessor. But how exactly are these theories related? How and when wave optics reduces to geometric optics is a rather simple problem. Similarly, how quantum optics reduces to wave optics has also been considered to be a very simple business. It is not so. As we show here the classical limit of quantum optics is a far more complicated issue; it is in fact dramatically more involved and it requires a complete revision of all our intuitions. The revised intuitions can then serve as a guide to finding novel quantum effects.

⁵ Author to whom any correspondence should be addressed.



Content from this work may be used under the terms of the [Creative Commons Attribution 3.0 licence](https://creativecommons.org/licenses/by/3.0/). Any further distribution of this work must maintain attribution to the author(s) and the title of the work, journal citation and DOI.

Inventing a new theory of nature requires, as Feynman [1] said, ‘imagination in a terrible strait-jacket’. Unlike the artist who need not obey constraints, as scientists we are not free to imagine whatever we want—the new theory must obey a ‘correspondence principle’. It must, obviously, give different predictions from those of the old theory for some phenomena, but at the same time it must agree with the old theory in all the places in which the old theory was already experimentally verified. For all those experiments the new theory must give numerical results that are very similar to those of the old theory; the only acceptable difference must be smaller than the precision of the measurements that seemed to confirm the old theory.

Insofar as the *numerical* predictions of a theory are concerned, the correspondence principle is fairly obvious and straightforward. However, theories are not only mathematical devices for making numerical predictions—they contain *concepts* that tell us a story of what the nature of physical reality is and, as Feynman also noted, even in situations when the numerical predictions of two theories are almost identical, the concepts they involve may be completely different. Indeed, it is a fundamental conceptual difference between, say, mass being an absolute constant or mass changing with the speed even when the speed is so low that the change of mass is negligible.

Yet, and this is the point that concerns us here, although the concepts of the two theories are completely different, and remain different even in the regime in which the two theories give almost identical numerical predictions, it seems to be the case that the story told by the new theory relates in rather simple ways to the story told by the old theory. For example, although mass changes with speed, at low speeds it changes only very little—it has a certain simple continuity relation with the old story of absolute constant mass. It does not have to be so—there is no need of any ‘continuity’ at the conceptual level, only the numerical predictions have to agree in the regime where the old theory was already verified—but the history of science seems to suggest that this is always the case.

Even the classical limit of quantum mechanics seems to be rather benign—with increasing mass, wavepackets can be taken narrower and narrower yet they will take longer and longer to spread, so particles can be better and better localized. Wavepackets will then follow trajectories very close to the classical ones. As we show here however, this benign behavior is only an illusion: we will present a situation (in the context of optics) where the classical limit of quantum mechanics tells a conceptual story that is dramatically different from that of classical physics.

An essential point to emphasize is that this whole discussion is not just restricted to interpretations. Quite the opposite. Allowing us to have a better intuition is essential for finding new and interesting quantum effects and may lead to new experiments and potential practical applications.

To start with, consider a beam of monochromatic light of frequency ω and high intensity I impinging on a mirror at an angle α as illustrated in figure 1. Suppose the beam has unit area and the experiment lasts a unit time. Classically, light is a wave and it carries a momentum proportional to its intensity. Upon reflecting from the mirror, it gives the mirror in each unit of time a momentum kick

$$\delta p_M = 2I \cos \alpha \quad (1)$$

equal to twice the component of the momentum normal to the mirror (for simplicity, throughout of this paper we take the speed of light $c = 1$). Quantum mechanically the story is different. Light consist of photons, each carrying a momentum $p = \hbar\omega$. The quantum state that best describes the physics of light in this ‘classical’ regime is the so called ‘coherent state’ [2, 3],

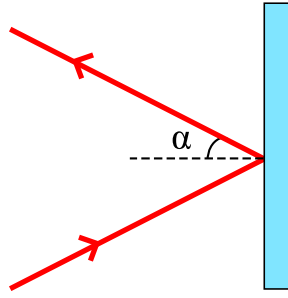


Figure 1. Light reflected on a mirror.

which is a superposition of different photon numbers with average number \bar{n} and spread $\Delta n = \sqrt{\bar{n}}$. All photons behave in an identical way: each photon bounces off the mirror and gives it a momentum kick, and the total average momentum imparted to the mirror is \bar{n} times the momentum given by each photon

$$\delta p_M = 2\bar{n}\hbar\omega \cos \alpha. \quad (2)$$

Given that the intensity of light is $I = \bar{n}\hbar\omega$, the momentum kick calculated quantum mechanically is identical to the classical one.

Although the classical and quantum stories are different, they seem nevertheless quite close to each other. Following this paradigmatic example, it is tempting to think that the classical-quantum transition follows a rather simple pattern. Nothing, however, can be further from the truth, as we show below.

Consider the interferometric experiment described in figure 2. The three mirrors used in the experiment are perfectly reflecting, with mirror M being silvered on both sides. The difference between this arrangement and a standard interferometer is that one of the beams emerging from the interferometer, does not directly enter the corresponding detector (D_1). Rather, it is first reflected by a supplementary mirror onto the mirror M which then reflects it toward the detector. Mirror M receives therefore two momentum kicks, one from the light inside the interferometer and one from the beam that reflects on it from the outside. The focus of interest in this experiment is the momentum received by the mirror M.

The incidence angles of the inside and outside light beams onto M are chosen such that $\cos \beta = \frac{1}{2} \cos \alpha$. The beamsplitters BS_1 and BS_2 are identical, having reflectivity r and transmissivity t , both given by real numbers with $r^2 + t^2 = 1$, and $r > t$. Using the standard convention, an incoming state $|in\rangle$ impinging on the beamsplitter will emerge as a superposition of a reflected state $|R\rangle$ and a transmitted state $|T\rangle$; $|in\rangle \rightarrow ir|R\rangle + t|T\rangle$. Hence when a single photon impinges from the left on BS_1 , as illustrated in figure 2, the effect of the beamsplitter is to produce inside the interferometer the state

$$|\Psi\rangle = ir|A\rangle + t|B\rangle, \quad (3)$$

where $|A\rangle$ and $|B\rangle$ denote the photon propagating along the A and B arms of the interferometer, respectively.

The second beamsplitter, BS_2 , is identical to the first. As one can readily check, a photon in the quantum state $|\Phi_1\rangle = t|A\rangle - ir|B\rangle$ impinging on the second beamsplitter, emerges toward detector D_1 while a photon in the orthogonal state $|\Phi_2\rangle = -ir|A\rangle + t|B\rangle$ emerges toward detector D_2 .

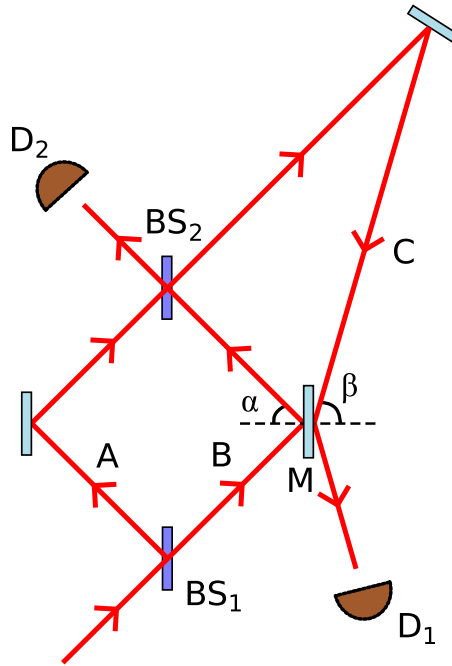


Figure 2. Mach-Zehnder interferometer with one output beam reflected back onto the exterior side of mirror M.

Thus, when a single photon enters the interferometer by impinging on the left side of the beamsplitter BS₁, the probabilities to be found in the arms A and B are r^2 and t^2 , respectively. The probability of emerging toward detector D₁ is $|\langle\Phi_1|\Psi\rangle|^2 = 4r^2t^2$ while the probability of emerging toward D₂ is $|\langle\Phi_2|\Psi\rangle|^2 = (r^2 - t^2)^2 = 1 - 4r^2t^2$.

Suppose now that we send a classical light beam of intensity I toward this interferometer. Given the above settings, the intensity of light in arm A is $I_A = r^2I$ while the intensity in arm B is $I_B = t^2I$. The intensities of the output beams are $I_{D_1} = 4r^2t^2I$ and $I_{D_2} = (1 - 4r^2t^2)I$.

Again, let the beam have a unit area and the experiment last a unit time. To find the momentum given to the mirror is straightforward. The momentum given by the beam inside the interferometer is $2I_B \cos \alpha = 2t^2I \cos \alpha$. The momentum given by the beam hitting the mirror from the outside is $2I_{D_1} \cos \beta = 8r^2t^2I \cos \beta$. The total momentum is thus

$$\delta p_M = 2t^2I(\cos \alpha - 4r^2 \cos \beta). \quad (4)$$

Using the fact that, by construction, $\cos \beta = \frac{1}{2} \cos \alpha$ we obtain

$$\delta p_M = 2t^2I(1 - 2r^2) \cos \alpha = -2t^2I(r^2 - t^2) \cos \alpha. \quad (5)$$

Since we took $r > t$, the sign of the momentum received by the mirror is negative, hence the mirror is pushed toward the inside of the interferometer.

The main result of the experiment is therefore that mirror M receives a net momentum toward the inside of the interferometer. The calculation above was done using classical optics, but a straightforward quantum calculation obviously leads to the same result. The issue however is with the story each theory has to tell. According to the classical optics description of the experiment, the story is very simple. Light impinges on M from two sides. Although the external beam has a shallower incidence angle than the inside beam, its intensity is much higher and

overall the momentum kick given by it is larger, hence the mirror is pushed inwards. We therefore conclude that the external beam impinging on M plays the central role—it is due to it that the mirror is pushed inwards. Hence one would be tempted to assume that quantum mechanically the photons that constitute this beam are the ones responsible for the inward push. Remarkably, this is not so.

Let us now analyze in detail the momentum given to the mirror by the photons that end up at D_1 and at D_2 . Each photon incident on M gives it a momentum kick δ . The first thing to notice is that each individual momentum kick is much smaller than the spread Δ of momentum of the mirror. This is a general property of any interferometer. It has to be so in order to maintain the coherence of the light in the interferometer; otherwise the photons will become entangled with the mirror. To show this, we note that a photon when going through arm A will produce no kick to M while when going through arm B will produce a kick. Accordingly, if we denote by $\phi(p)$ the initial quantum state of the mirror and by $|\Psi\rangle$ the quantum state of the photon after the input beamsplitter BS_1 , but before reaching the mirror, then the reflection on the mirror results in

$$|\Psi\rangle\phi(p) = (ir|A\rangle + t|B\rangle)\phi(p) \rightarrow ir|A\rangle\phi(p) + t|B\rangle\phi(p - \delta). \quad (6)$$

If $\phi(p)$ is orthogonal to $\phi(p - \delta)$ where $\delta = 2\hbar\omega \cos\alpha$ is the kick given by the photon, then the photon ends up entangled with the mirror and coherence is lost. Another way of looking at this is to note that the mirror has to be localized within a distance smaller than the wavelength of light, otherwise there will be phase fluctuations larger than 2π and interference is lost. (In fact the spread Δ in the momentum of the mirror has to be many times bigger—of order $\sqrt{\bar{n}}$ times—than that of an individual kick to ensure coherence when a beam with an average of \bar{n} photons and a spread $\sqrt{\bar{n}}$ goes through the interferometer. At the same time Δ , being of order $\sqrt{\bar{n}}\delta$, is small enough so that the average kick, which is of order $\bar{n}\delta$ is detectable.)

For simplicity we take the state of the mirror to be (up to normalization) $\phi(p) = \exp(-\frac{p^2}{2\Delta^2})$. Consider now a single photon propagating through the interferometer. Given that $\delta \ll \Delta$, we can approximate the state (6) of the photon and mirror just before the photon reaches the output beamsplitter by

$$\begin{aligned} |\Psi\rangle\phi(p) &\approx ir|A\rangle\phi(p) + t|B\rangle\left(\phi(p) - \frac{d\phi(p)}{dp}\delta\right) \\ &= |\Psi\rangle\phi(p) - t|B\rangle\frac{d\phi(p)}{dp}\delta. \end{aligned} \quad (7)$$

Suppose now that the photon emerges in the beam directed toward D_1 . The state of the mirror is then given (up to normalization) by projecting the joint state onto the state of the photon corresponding to this beam, i.e.

$$\begin{aligned} &\langle\Phi_1|\left(|\Psi\rangle\phi(p) - t|B\rangle\frac{d\phi(p)}{dp}\delta\right), \\ &= \langle\Phi_1|\Psi\rangle\left(\phi(p) - \frac{t\langle\Phi_1|B\rangle}{\langle\Phi_1|\Psi\rangle}\frac{d\phi(p)}{dp}\delta\right), \\ &= \langle\Phi_1|\Psi\rangle\left(\phi(p) - \frac{\langle\Phi_1|P_B|\Psi\rangle}{\langle\Phi_1|\Psi\rangle}\frac{d\phi(p)}{dp}\delta\right), \\ &= \langle\Phi_1|\Psi\rangle\phi(p - P_B^w\delta). \end{aligned} \quad (8)$$

Here $P_B = |B\rangle\langle B|$ is the projection operator on state $|B\rangle$ and $P_B^w = \frac{\langle\Phi_1|P_B|\Psi\rangle}{\langle\Phi_1|\Psi\rangle}$ is the so called weak value of P_B between the initial state $|\Psi\rangle$ and the final state $|\Phi_1\rangle$ [4]. The value of P_B^w is

readily found to be

$$\begin{aligned} P_B^w &= \frac{\langle \Phi_1 | P_B | \Psi \rangle}{\langle \Phi_1 | \Psi \rangle} = \frac{(t \langle A | + ir \langle B |) P_B (ir | A \rangle + t | B \rangle)}{(t \langle A | + ir \langle B |) (ir | A \rangle + t | B \rangle)}, \\ &= \frac{rt}{tr + rt} = \frac{1}{2}, \end{aligned} \quad (9)$$

which leads to the conclusion that the state of the mirror when the photon emerges from the interferometer is $\phi(p - \frac{1}{2}\delta)$. In other words, a photon that emerges in the D_1 beam changes the mirror by $\delta p_M = \frac{1}{2}\delta = \hbar\omega \cos \alpha$. This momentum change is a result of the mirror receiving a superposition between a kick δ and no kick at all, corresponding to the photon propagating through the two arms.

The appearance in the above of the weak value of the projector P_B is not accidental. Indeed, we can view the mirror as a measuring device measuring whether or not the photon is in arm B or not. The momentum of the mirror acts as a ‘pointer’ (no kick—the photon is in arm A ; kick—the photon is in arm B). However, since the photon can only change the position of the pointer (i.e. the momentum of the mirror) by far less than its spread, we are in the so called ‘weak measurement’ regime [4].

So far, we discussed the kick given to the mirror by photons which eventually emerges toward D_1 , by the collision inside the interferometer. After leaving the interferometer toward D_1 the photon gives another kick to the mirror, this time from the exterior. This kick is simply $2\hbar\omega \cos \beta$. Recalling that $\cos \beta = \frac{1}{2} \cos \alpha$ we reach the crucial point of our paper: the total kick given to the mirror by a photon that ends up in D_1 is

$$\delta p_M = \hbar\omega \cos \alpha - 2\hbar\omega \cos \beta = 0. \quad (10)$$

Since the above experiment is in the linear optics regime, the conclusion reached above for a single photon is valid for all the photons that end up at D_1 : none of them gives an overall kick to the mirror.

Then who gives the mirror its momentum? The photons that emerge toward D_2 . Indeed, the state of the mirror in this case can be computed by a calculation similar to the one above, by simply replacing $\langle \Phi_1 |$ by $\langle \Phi_2 |$.

The state of the mirror can be readily found to be

$$\begin{aligned} &\langle \Phi_2 | \left(|\Psi\rangle \phi(p) - t |B\rangle \frac{d\phi(p)}{dp} \delta \right) \\ &= \langle \Phi_2 | \Psi \rangle \phi(p - P_B^w \delta) \end{aligned} \quad (11)$$

with P_B^w being in this case the weak value of P_B between $|\Psi\rangle$ and $|\Phi_2\rangle$,

$$\begin{aligned} P_B^w &= \frac{\langle \Phi_2 | P_B | \Psi \rangle}{\langle \Phi_2 | \Psi \rangle} = \frac{(ir \langle A | + t \langle B |) P_B (ir | A \rangle + t | B \rangle)}{(ir \langle A | + t \langle B |) (ir | A \rangle + t | B \rangle)} \\ &= -\frac{t^2}{r^2 - t^2}. \end{aligned} \quad (12)$$

Hence the momentum kick received by the mirror due to a photon emerging toward D_2 is

$$\delta p_M = P_B^w \delta = -\frac{t^2}{r^2 - t^2} 2\hbar\omega \cos \alpha. \quad (13)$$

Finally, the total momentum given to the mirror by all the photons emerging toward D_2 is given by the momentum due to each photon times the number of photons in the beam. Using the fact that the probability of a photon to end in this beam is $(r^2 - t^2)^2$ we obtain

$$\delta p_M = \bar{n}(r^2 - t^2)^2 \frac{-t^2}{r^2 - t^2} 2\hbar\omega \cos \alpha = -2t^2 \hbar\omega \bar{n}(r^2 - t^2) \cos \alpha \quad (14)$$

identical to the classical result (5).

To summarize, the story told by quantum mechanics is dramatically different from the classical one. Classically it is the light in the D_1 beam that is responsible for giving the mirror the kick toward the inside of the interferometer. Indeed, it is only this beam that can give a momentum in this direction. The light in the interferometer can either give no momentum (beam A), or a momentum toward the exterior (beam B). It was therefore tempting to assume that quantum mechanically it is also the case that the photons in the D_1 beam are those responsible for the effect. What we found however is that the photons that end up in the D_1 beam have overall no effect whatsoever—the momentum they give when colliding with the mirror from the outside is exactly compensated by the momentum they gave the mirror while inside the interferometer, so the total momentum they give is strictly zero. In fact, according to quantum mechanics, it is the photons that end up in the D_2 beam that give the momentum kick. Astonishingly, although they collide with the mirror only from the inside of the interferometer, they do not push the mirror outwards; rather they somehow succeed to pull it in! This is realized by a superposition of giving the mirror zero momentum and positive momentum—the superposition results in the mirror gaining negative momentum.

As mentioned before, our analysis is not limited to interpretational issues. It also serves as a guide for our intuition. Suppose that, by a quantum fluctuation, we receive more than the average number of photons at detector D_1 . The classical intuition will lead us to expect that now the mirror will receive an even larger momentum inwards. Our analysis above tells us differently—since the effect is due to photons going toward D_2 and now there are fewer of them, the inward momentum will be smaller.

Acknowledgments

This work was supported in part by the Binational Science Foundation grant no. 32/08, the Israel Science Foundation grant no. 1125/10, the Templeton Foundation, ERC Advanced grant NLST and EU grant Qessence.

References

- [1] Feynman R 1965 *The Character of Physical Law* (London: Penguin) chapter 7
- [2] Sudarshan E C G 1963 *Phys. Rev. Lett.* **10** 277–9
- [3] Glauber R J 1963 *Phys. Rev.* **131** 2766–88
- [4] Aharonov Y and Vaidman L 1990 *Phys. Rev. A* **41** 11–20