

Supplementary information

Cytotoxic activity of non-specific lipid transfer protein (nsLTP1) from Ajwain (*Trachyspermum ammi*) seeds

Saud O. Alshammari^{1,2}, Taibah Aldakhil¹, Qamar A. Alshammari^{1,3}, David Salehi¹, Aftab Ahmed^{1,*}

¹ Biomedical and Pharmaceutical Sciences, Chapman University School of Pharmacy, Irvine, CA 92618, USA

² Department of Plant Chemistry and Natural Products, Faculty of Pharmacy, Northern Border University, KSA

³ Department of Pharmacology and Toxicology, Faculty of Pharmacy, Northern Border University, KSA

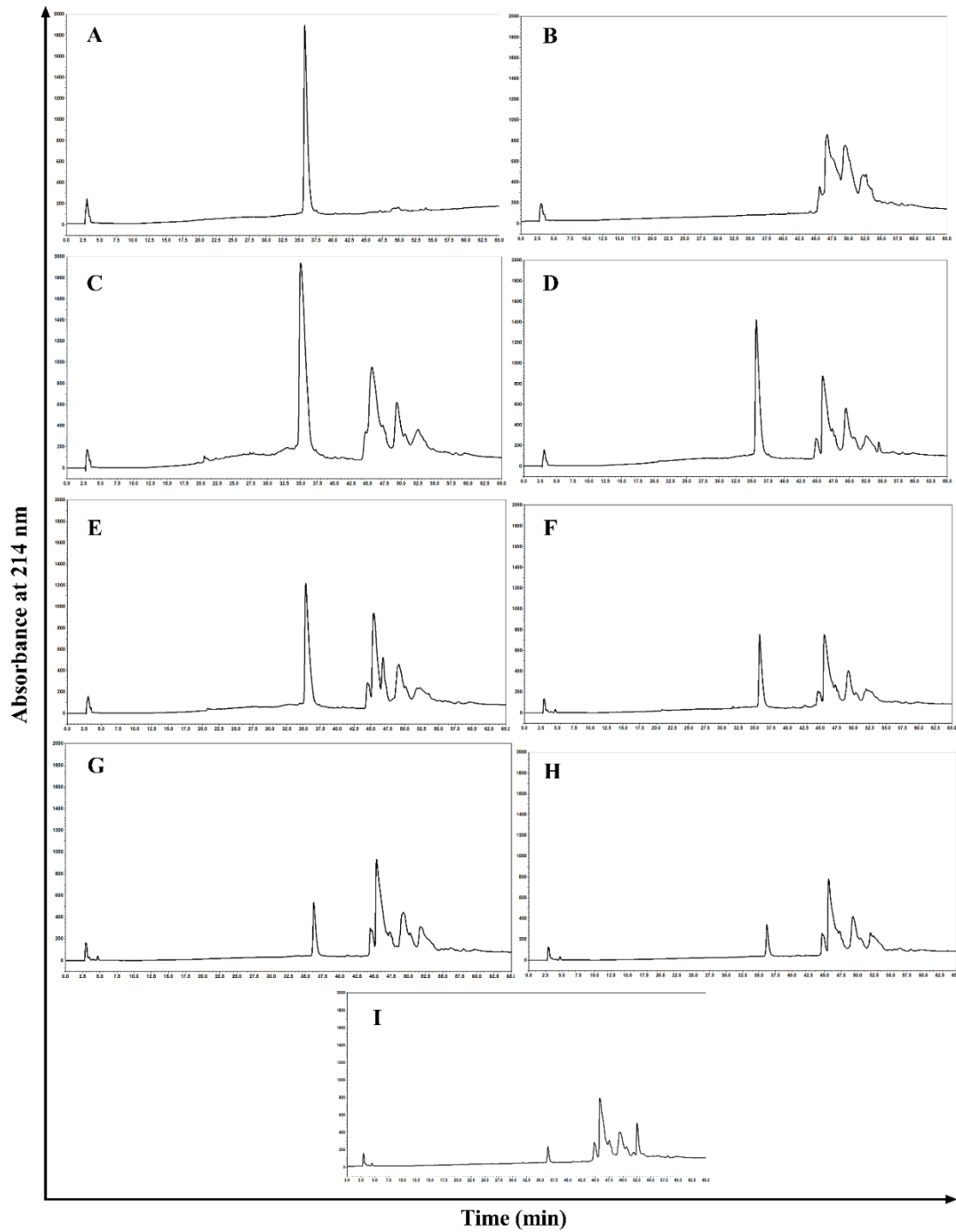
⁴ Department of Pharmaceutical Chemistry, College of Pharmacy, Prince Sattam Bin Abdulaziz University, Al-Kharj, KSA

*Corresponding author

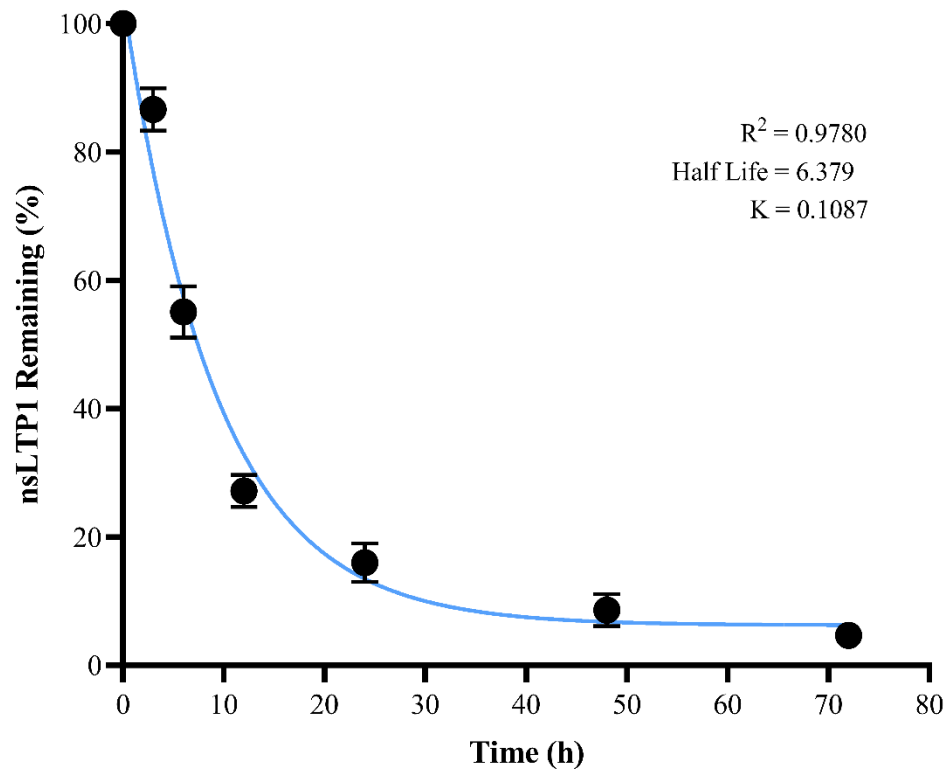
Aftab Ahmed
Chapman University School of Pharmacy
9401 Jeronimo Road
Irvine, CA 92618
USA
Tel: (714) 516-5465
Fax: (714) 516-5481
aahmed@chapman.edu

Supplementary Figure S1: Stability of Ajwain nsLTP1 in cell culture medium containing 10% FBS.

(A) nsLTP1 alone (B) cell culture medium containing 10% FBS alone (C-I) representing the percent remaining of nsLTP1 quantified for specific incubation time points ranging from 0 to 72 h using the area under the curve (AUC) in analytical RP-HPLC.



Supplementary Figure S2: The percent remaining of nsLTP1 in the cell culture medium containing 10% FBS was quantified for specific incubation time points ranging from 0 to 72 h. The area under the curve (AUC) values reflect the nsLTP1 remaining percentage. The estimated half-life was ~ 6.4 h. Each point represents an average of three independent replicates.



Supplementary Figure S3: Chromatographic profile of Ajwain (A) nsLTP1 alone eluted at 36 min (B) Human serum proteins eluted between 45-47 min. Samples were prepared in 100% cold methanol and analyzed by RP-HPLC. Column Aeris Widepore-C4 particle size 3.6 μm , pore size 200 \AA (250 \times 4.6 mm); gradient from 0–60% acetonitrile with 0.1% trifluoroacetic acid (TFA) in 65 min. The elution flow rate was 1 mL/min, and the absorbance was monitored at 214 nm.

