

7-19-1990

## Henri Temianka Correspondence; (bradbury)

Ray Bradbury

Follow this and additional works at: [https://digitalcommons.chapman.edu/temianka\\_correspondence](https://digitalcommons.chapman.edu/temianka_correspondence)

---

### Recommended Citation

Bradbury, Ray, "Henri Temianka Correspondence; (bradbury)" (1990). *Henri Temianka Correspondence*. 2433.

[https://digitalcommons.chapman.edu/temianka\\_correspondence/2433](https://digitalcommons.chapman.edu/temianka_correspondence/2433)

This Letter is brought to you for free and open access by the Henri Temianka Archives at Chapman University Digital Commons. It has been accepted for inclusion in Henri Temianka Correspondence by an authorized administrator of Chapman University Digital Commons. For more information, please contact [laughtin@chapman.edu](mailto:laughtin@chapman.edu).

---

## Henri Temianka Correspondence; (bradbury)

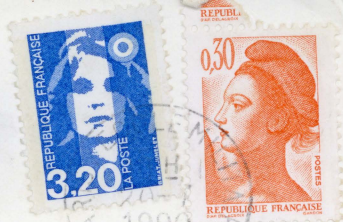
### Description

This collection contains material pertaining to the life, career, and activities of Henri Temianka, violin virtuoso, conductor, music teacher, and author. Materials include correspondence, concert programs and flyers, music scores, photographs, and books.

### Keywords

Henri Temianka, Ray Bradbury, July 19, 1990, virtuosity in musical performance, culture, violinist, violin, chamber music, camaraderie, husband, wife, airmail, postal service, postage stamps

EMMY!  
HENRI!  
LOVE!  
BOB BRUBIN  
7/19/90



~~THE~~ TENIANKAS!  
2915 PATRICIA AVE.  
LOS ANGELES,  
CALIFORNIA  
90064,  
U.S.A.

LA CLOSERIE DES LILAS

Café Littéraire et Artistique  
RESTAURANT - BAR AMÉRICAIN

171, Boulevard du Montparnasse - Paris

Tél. : DAN. 70-50 et ODE. 21-68 - PARKING

LA  
CLOSERIE  
DES  
LILAS



Gran saba

[[Nick Dante 8/2/17]]

[[Henri Temianka Correspondence  
Ray Bradbury  
Letter #54]]

[[Page 1 – Letter]]

EMMY!  
HENRI!

[[image – PAR AVION  
postage stamp]]

[[image - REPUBLIQUE FRANCE  
postage stamp]]

[[image - drawing]]

LOVE!

RAY BRADBURY  
7/19/90

THE TEMIANKAS!  
2915 PATRICIA AVE.  
LOS ANGELES,  
CALIFORNIA  
90064,  
U. S. A.