

Chapman University

## Chapman University Digital Commons

---

Student Scholar Symposium Abstracts and Posters

Center for Undergraduate Excellence

---

Fall 11-30-2022

### Sociocultural Pressures Among Parents of Queer Children in Films With Non-Western Environments

Samay Bhasin

Chapman University, [bhasin@chapman.edu](mailto:bhasin@chapman.edu)

Follow this and additional works at: [https://digitalcommons.chapman.edu/cusrd\\_abstracts](https://digitalcommons.chapman.edu/cusrd_abstracts)

---

#### Recommended Citation

Bhasin, Samay, "Sociocultural Pressures Among Parents of Queer Children in Films With Non-Western Environments" (2022). *Student Scholar Symposium Abstracts and Posters*. 551.

[https://digitalcommons.chapman.edu/cusrd\\_abstracts/551](https://digitalcommons.chapman.edu/cusrd_abstracts/551)

This Presentation is brought to you for free and open access by the Center for Undergraduate Excellence at Chapman University Digital Commons. It has been accepted for inclusion in Student Scholar Symposium Abstracts and Posters by an authorized administrator of Chapman University Digital Commons. For more information, please contact [laughtin@chapman.edu](mailto:laughtin@chapman.edu).



# **Sociocultural Pressures Among Parents of Queer Children in Films With Non-Western Environments**

By Samay Bhasin



**“ethnic minority parents appear to exhibit greater parental rejection, in part, due to more negative attitudes about homosexuality in general”**

(Richter et al., 2017)




# Hypothesis

Heightened sociocultural pressures accelerate queerphobia among parents of queer children because of a western presence rooted in colonialism and oppression.



# Literature Review



# Patterns Among Ethnic Minorities and Queer Children

- Higher suicide, depression, and substance abuse rates (Ryan et al., 2009)
- Richter and colleagues (2017) find that ethnic minorities exhibit higher rates of homophobia

# Queer Cinema

Queer Film has 2 interactions with society

1. Representation for community
2. Create understanding with outgroups





**There is still a significant gap in scientific research on creating supportive environments for queer children**

(Caroline et al., 2018)





# Methods

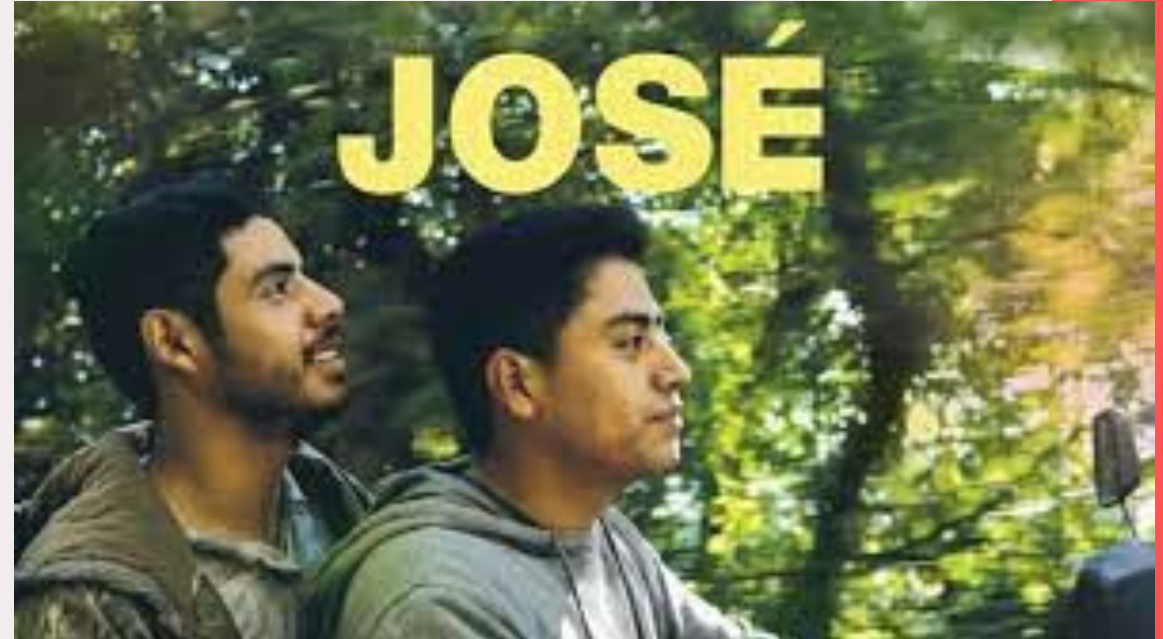
Films: *The Wound*, *XXY*, *José*, *Pariah*, *Moonlight*

- PV: Western presence
- OV: Homophobia among parents
- Western presence
  - Colonialism
    - Christianity
    - Legal Influences
    - Historical Influences

# ***José***

By Li Cheng

Summary: José is a closeted gay man living with just his mother getting by with the little money they can make. His life is repetitive and uneventful. But he consistently sneaks out with his secret lover, Luis, throughout the film. Luis eventually wants to run away with José to be free and live a new life as a couple, but José is hesitant. His mother eventually finds out José is gay and her worry continues to guilt José into staying with her.



# ***José***

- Religious themes in the movie
  - Preacher
  - Mother
- History of christianity in Guatemala



# XXY

By Lucia Puenzo

Summary: Alex is intersex but confronted with the possibility of a sex reassignment surgery after her mother, Suli, invites a surgeon and his family to stay for some time. During this time, people in Alex's community learn she is intersex and she faces terrible treatment from other people. Despite this Alex still feels unwilling to go through with the surgery.



# XXY

- No signs of christian, legal, or historical colonial influences
- Argentina – Mass migration
  - “Basically European”
    - Granted LGBTQ rights as European countries did
- Rejects my hypothesis



# *Pariah*

By Dee Rees

Summary: Follows the lesbian experience of Alike. Throughout the movie, Alike exploring her sexuality and self-expression while trying to hide these efforts from her mother, Audrey. Audrey serves as the main antagonist to Alike's queer journey. She is controlling and wants to dictate what Alike presents herself as to the world. This foreshadows an abusive outburst by Audrey towards Alike after Alike is forced to come out to her family.



# *Pariah*

- “Angry black mother” trope
- Influence of the black church
  - (Ward, 2005)
- Racial stereotypes
  - Hypersexuality
  - Hypermasculinity



# Conclusion

1. Reevaluating my hypothesis
2. Implications







**Thank** *you!*

