

Chapman University

Chapman University Digital Commons

ESI Publications

Economic Science Institute

3-22-2015

Inclusive Fitness and Differential Productivity Across the Life Course Determine Intergenerational Transfers in a Small-Scale Human Society

Paul L. Hooper
Emory University

Michael Gurven
University of California, Santa Barbara

Jeffrey Winking
Texas A&M University

Hillard Kaplan
Chapman University, hkaplan@chapman.edu

Follow this and additional works at: https://digitalcommons.chapman.edu/esi_pubs



Part of the [Biological and Physical Anthropology Commons](#), [Economic Theory Commons](#), [Ethnic Studies Commons](#), [Latin American Studies Commons](#), [Other Anthropology Commons](#), [Other Economics Commons](#), and the [Social and Cultural Anthropology Commons](#)

Recommended Citation

Hooper, P. L., Gurven, M., Winking, J., & Kaplan, H. S. (2015). Inclusive fitness and differential productivity across the life course determine intergenerational transfers in a small-scale human society. *Proceedings of the Royal Society B: Biological Sciences*, 282(1803), 20142808. <https://doi.org/10.1098/rspb.2014.2808>

This Article is brought to you for free and open access by the Economic Science Institute at Chapman University Digital Commons. It has been accepted for inclusion in ESI Publications by an authorized administrator of Chapman University Digital Commons. For more information, please contact laughtin@chapman.edu.



Cite this article: Hooper PL, Gurven M, Winking J, Kaplan HS. 2015 Inclusive fitness and differential productivity across the life course determine intergenerational transfers in a small-scale human society. *Proc. R. Soc. B* **282**: 20142808.
<http://dx.doi.org/10.1098/rspb.2014.2808>

Received: 24 November 2014

Accepted: 14 January 2015

Subject Areas:

behaviour, ecology, evolution

Keywords:

human life history, inclusive fitness, intergenerational transfers, parental investment, grandparental investment, food sharing

Author for correspondence:

Paul L. Hooper

e-mail: phooper@emory.edu

Electronic supplementary material is available at <http://dx.doi.org/10.1098/rspb.2014.2808> or via <http://rspb.royalsocietypublishing.org>.

Inclusive fitness and differential productivity across the life course determine intergenerational transfers in a small-scale human society

Paul L. Hooper^{1,2}, Michael Gurven³, Jeffrey Winking⁴ and Hillard S. Kaplan⁵

¹Department of Anthropology, Emory University, 1557 Dickey Drive, Atlanta, GA 30322, USA

²Santa Fe Institute, 1399 Hyde Park Road, Santa Fe, NM 87501, USA

³Department of Anthropology, University of California Santa Barbara, Santa Barbara, CA 93106, USA

⁴Department of Anthropology, Texas A&M University, Mailstop 4352, College Station, TX 77843, USA

⁵Department of Anthropology, University of New Mexico, MSC01–1040, Albuquerque, NM 87131, USA

Transfers of resources between generations are an essential element in current models of human life-history evolution accounting for prolonged development, extended lifespan and menopause. Integrating these models with Hamilton's theory of inclusive fitness, we predict that the interaction of biological kinship with the age-schedule of resource production should be a key driver of intergenerational transfers. In the empirical case of Tsimane' forager-horticulturalists in Bolivian Amazonia, we provide a detailed characterization of net transfers of food according to age, sex, kinship and the net need of donors and recipients. We show that parents, grandparents and siblings provide significant net downward transfers of food across generations. We demonstrate that the extent of provisioning responds facultatively to variation in the productivity and demographic composition of families, as predicted by the theory. We hypothesize that the motivation to provide these critical transfers is a fundamental force that binds together human nuclear and extended families. The ubiquity of three-generational families in human societies may thus be a direct reflection of fundamental evolutionary constraints on an organism's life-history and social organization.

1. Introduction

Relative to other primates and mammals, humans show remarkably late maturation, extended lifespan and reproductive cessation preceding general somatic senescence [1–3]. Recent theories of human life-history evolution have indicated a crucial role for intergenerational resource transfers in supporting these distinctive features of human life-history [4–7]. These theories propose that transfers increasing the fertility and survival of close relatives constitute a form of 'indirect' reproduction, which has allowed selection to favour the evolution of significant post-reproductive lifespan. While a number of empirical studies have provided hints regarding the structure of fitness-enhancing transfers [7–10], few have provided detailed statistical breakdowns of their direction and volume across the life course.

In terms of theory, existing models of intergenerational transfers have not fully integrated the inclusive fitness motivations for transfers with the economics of resource production and consumption across the life course. Rogers' model of the evolution of menopause [11] considered direct demographic effects of kin altruism within the framework of inclusive fitness theory [12] but did not explicitly treat economic production or transfers. The life-history models of Kaplan & Robson [4,13,14] and Lee [6,15], on the other hand, represented transfers by allowing costless borrowing and lending of resources

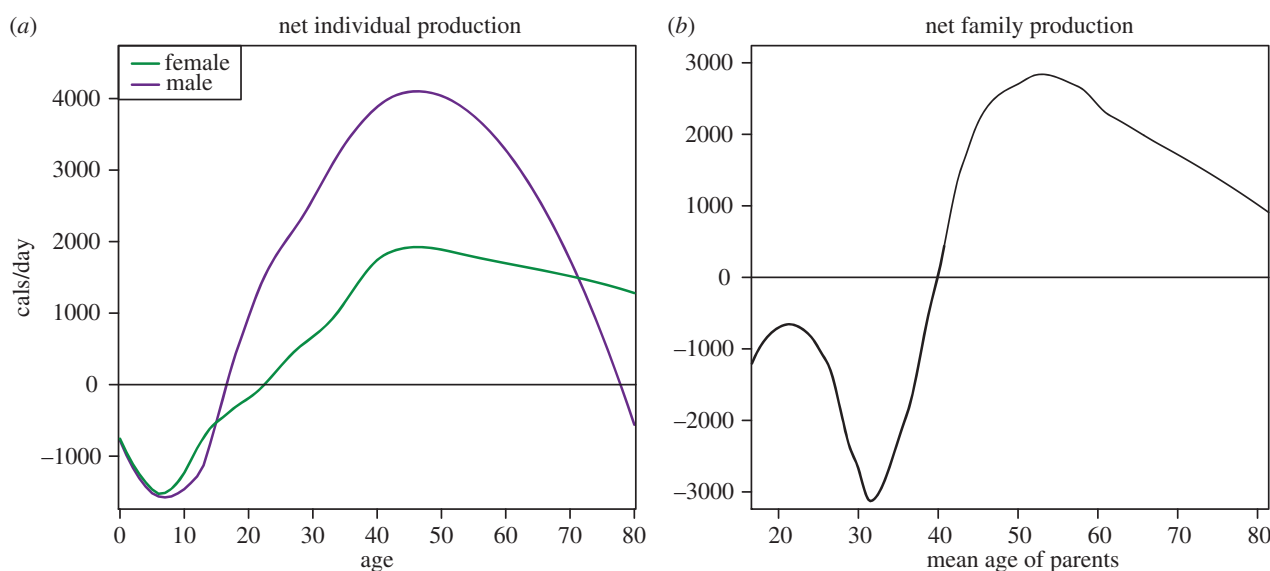


Figure 1. Net production of Tsimane' (a) individuals and (b) nuclear families.

across different ages within lineages, and thus effectively assumed perfect relatedness between donors and recipients.

Extending the theory of intergenerational transfers to capture the reality of imperfect and variable relatedness between individuals has three advantages. First, it considers the effects of transfers on the long-term inclusive fitness of donors, and gives a basis for their evolutionary stability in the face of selection. Second, by specifying who is expected to provide net transfers to whom, under what circumstances, it provides predictions for the heterogeneous structure of networks of social support and investment, and moves away from unrealistic assumptions of homogeneous interactions within groups. Third, the analysis enriches inclusive fitness theory by providing a concrete and systematic source of variation in the benefits and costs of kin altruism, which is based on the life-history of development and productivity, rather than focusing on genetic relatedness alone [16].

This paper has three related goals. The first is to integrate Hamilton's theory of inclusive fitness with life-history theory and derive predictions for the relationship between production, consumption, kinship and transfers. The second is to empirically characterize net caloric production and transfers, as they vary by sex, age, productivity and relationship, in one small-scale subsistence-based human society, the Tsimane' of lowland Bolivia. The third is to test the predictions derived from the theory and assess the extent to which observed patterns of transfers are explained by kin selection and life-history theory.

The following section develops the theory of transfers on the basis of kin selection and life-history and derives predictions for expected patterns of resource flows across life in human economic systems. This is followed by an empirical analysis of food transfers within and between families from a study of 1254 individuals in 8 Tsimane' communities over a mean period of 14 months. The findings are then discussed in the light of the theory and the evolution of human and non-human life histories more generally.

2. Theory and predictions

Hamilton's theory of inclusive fitness predicts that selection will favour kinship-based altruism when the benefit of the

altruistic act to the recipient (b) devalued by the coefficient of relatedness between the two individuals (r) exceeds the cost to the donor (c), or $br > c$ [12]. Life-history theory provides a specific means of understanding how both the benefits and costs of altruistic transfers are likely to vary systematically across the life course.

For a given pair of individuals or families, the relationship between age and the marginal benefit of receiving calories, on the one hand, and between age and the marginal cost of giving calories, on the other, should depend on both the availability of calories and the benefits of consumption at that age. These benefits and costs are fundamentally determined by the age-schedules of productive ability and work. For organisms that require learning to achieve adult competence, early in life—when individuals are relatively inefficient producers and cannot meet their energy requirements through their own work effort—the marginal benefit of receiving calories from others should be relatively higher. Conversely, when efficiency is high at older ages, the marginal cost of giving away calories should be reduced, owing to high productivity and diminishing returns to personal consumption.

Data from small-scale human societies show that the asymmetry between low early-life productivity and high later-life productivity is especially great for humans compared to chimpanzees [8,9,17–20]. The life-history of net caloric productivity (gross daily production minus consumption) in the Tsimane' case is given in figure 1a. On average, Tsimane' offspring consume more than they produce for most of the first two decades of life. Later in life, from the late 20s through the 60s, adults produce major caloric surpluses that far outstrip individual consumption requirements. Such large asymmetries in the ability to produce calories across life are predicted to generate differential costs of giving, and benefits of receiving, that motivate substantial net transfers from older to younger kin within nuclear and extended families.

Among the Tsimane', asymmetries in individual productivity and consumption also give rise to systematic imbalances in the caloric budgets of nuclear families (single or married adults and their immediate dependents, who live and eat together as a unit), as shown in figure 1b. On average, younger families—with parents not yet at peak productivity, and multiple unproductive dependent offspring—show net caloric deficits; while older families—with highly productive parents,

and few young dependents—produce net surpluses. The theoretical implication of this is that nuclear families with more dependents and/or lower productivity should face higher gains from receiving and higher costs of giving; while those with fewer dependents and/or higher productivity should face lower gains from receiving and lower costs of giving.

This study provides a number of explicit tests of the theory developed here and in preceding work [5,7,8,21]. First, in an analysis of transfers between individuals, we test the fundamental predictions **P1** and **P2**, that parents and grandparents provide significant net downward transfers to offspring and grandoffspring, respectively. Second, we leverage variation in the caloric budgets of nuclear families (i.e. the extent of net caloric surplus or deficit) to test predictions arising from the application of inclusive fitness theory to economic life-history. The multiplicative role of r in Hamilton's rule ($br > c$ or, equivalently, $b > c/r$) implies that need and relatedness *interact* in the determination of transfers. In other words, need should only be associated with net transfers among related individuals, and more so as relatedness increases. **P3** therefore predicts that relatedness interacts *negatively* with the net need of donors, whereas **P4** predicts that relatedness interacts *positively* with the net need of recipients in determining net transfers.

The current theory does not predict that net need, independent of relatedness, should be associated with substantial net transfers. It is important to note, however, that non-kin should be expected to benefit from exchanging food reciprocally when differing in relative need over short time-scales, an observation that has been well attested in many analyses of food sharing in small-scale societies [22–24]. The current study, however, aims to examine the effect of long-term net need based on the demographic composition of families, rather than fluctuations over shorter time-scales of weeks and months. Thus, with the present operationalization, if exchange relationships are—on average—reciprocally balanced across the time period examined, we would still expect more-or-less zero net transfers between more distant kin and non-kin pairs.

Prior studies of resource transfers in small-scale human societies have often focused on direct associations between kinship and transfers [25–30], without treating the moderating effects of life-history stage. Several studies have considered the effect of reproductive value on sharing [31,32], which tends to produce downward transfers given competing recipients with the same r . Others have evaluated the relationship between transfers and indices of familial need (e.g. number of dependents or producer:consumer ratios) without explicitly considering their interaction with kinship [25,28,29,31]. In a study of Ache reservation food-sharing prefiguring the current approach, Allen-Arave *et al.* [33] examined the relationship between net transfers and the interaction of r with the difference in the net need of households, but did not separate the effects of donor versus recipient need, nor characterize transfers at the individual level.

The current study—based on b and c in Hamilton's equation, as determined by the constraints of life-history, productivity and individual differences—complements these past approaches. Here, we empirically operationalize variation in b and c across life; predict the direction and volume of net transfers between individuals and families on the basis of these variables; then test the predictions in a series of statistical models. In combination with kinship, the index of net need used in this study—daily consumption minus gross

production, estimated from high-resolution individual-level data over a more than one-year study period—provides a continuous predictor for the strength of relationships across Tsimane' extended families.

3. Material and methods

(a) Data collection

Data were collected through fieldwork with Tsimane' forager-horticulturalists between 2005 and 2010 under the aegis of the Tsimane' Health and Life History Project [34,35]. The Tsimane' are an Amerindian group native to the Beni Department of lowland Bolivia [36–39]. Production-and-sharing interviews covering subsistence economic activities were conducted with families in the Tsimane' language roughly twice per week. The production activities and returns of each family member in the preceding two days were queried and recorded. For each food product produced, interviewees were asked which individuals had consumed portions of the product in prepared meals, and which had received portions of the product as raw gifts, in what quantity. Additionally, horticultural field interviews were conducted with each family on a yearly basis that documented labour contributions to fields and final crop yields. Further details on the interview sample, methods and the calculation of daily food production, consumption, transfers and kinship are given in the electronic supplementary material, S1 and [35].

(b) Statistical analysis

Three sets of models were estimated to evaluate the direction, volume and statistical significance of net transfers within communities: (set A) net transfers *from focal individuals* to all children, grandchildren, spouses and children-in-law (electronic supplementary material, tables E1, E3, E5 and E6); (set B) net transfers *to focal individuals* from all parents, grandparents and parents-in-law (electronic supplementary material, tables E2, E4 and E7); and (set C) net transfers *between nuclear families* (tables 1 and 2).

For the individual-level models in sets A and B, mixed-effect regression [40,41] was employed to characterize the sum of net food transfers between focal individuals and different categories of kin as a function of sex and age. For the family-level models in set C, mixed-effect regression was used to estimate net transfers from an older nuclear family i to a younger family j co-resident in the same community. These family-level models—which predict net transfers as a function of kinship, the net need of each family and their interaction—capture important patterns of secondary redistribution that occur with regular pooling of food within nuclear families (reproductive-age single or married adults and their immediate dependents). Two variables representing the net need of families—measured net need and an instrumental variable of estimated net need—were used in the analyses reported in tables 1 and 2; the interpretation of these variables is discussed in the electronic supplementary material, S2.2 and in §4.

4. Results

(a) Transfers between individuals

Figure 2 summarizes net transfers of food between generations within Tsimane' extended families, based on model estimates reported in electronic supplementary material, tables E1–E7.

Mean net caloric transfers of primary production to all offspring from Tsimane' fathers and mothers (above and beyond lactation) are given in figure 2a (electronic supplementary material, table E1). In support of **P1**, adults of

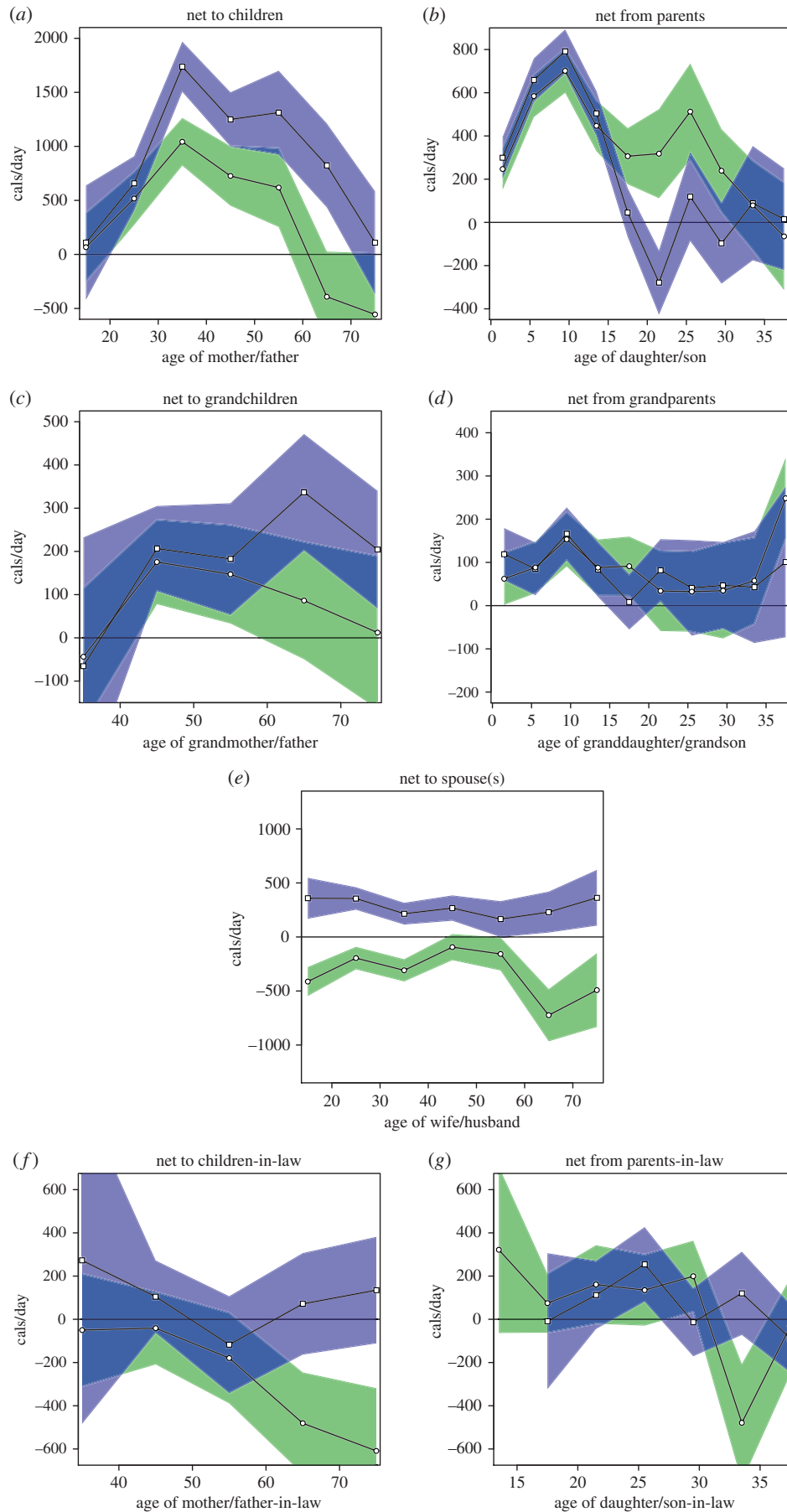


Figure 2. Net transfers of food as a function of donor and recipient age and sex. Means and standard errors are showed in green for females and purple for males. (a) Net from a focal mother/father to all children. (b) Net to a focal daughter/son from all parents. (c) Net from a focal grandmother/grandfather to all grandchildren. (d) Net to a focal granddaughter/grandson from all grandparents. (e) Net from a focal wife/husband to her/his spouse (or spouses). (f) Net from a focal mother/father-in-law to all children-in-law. (g) Net to a focal daughter/son-in-law from all parents-in-law. Values are derived from electronic supplementary material, tables E1–E7. Note that the y-axis varies depending on the scale of the net transfer values, and that transfers from mothers to offspring do not include contributions through lactation.

Table 1. Mixed-effect models predicting net transfers (calories per day) from older nuclear family *i* to younger nuclear family *j*, as a function of genetic relatedness, net caloric need and their interaction. Net transfers and need are standardized to have mean = 0 and s.d. = 1. *n* = 3279 family–family dyads. Further details on the models and variables are given in the electronic supplementary material, S2.2. *p*-values indicate whether the regression coefficient *B* deviates significantly from the null expectation of zero.

| predictors of net transfer fam. <i>i</i> → fam. <i>j</i> | 1. estimated net need model | | | 2. measured net need model | | |
|--|-----------------------------|-------|-----------------|----------------------------|-------|-----------------|
| | <i>B</i> | s.e. | <i>p</i> -value | <i>B</i> | s.e. | <i>p</i> -value |
| intercept | 0.013 | 0.146 | 0.121 | 0.011 | 0.146 | 0.137 |
| <i>r</i> | 1.010 | 0.278 | 0.001 | 1.135 | 0.271 | <0.001 |
| net need of <i>i</i> | −0.001 | 0.020 | 0.497 | −0.019 | 0.021 | 0.123 |
| net need of <i>j</i> | 0.010 | 0.020 | 0.306 | 0.019 | 0.021 | 0.172 |
| net need of <i>i</i> × <i>r</i> | −1.465 | 0.298 | <0.001 | −1.656 | 0.268 | 0.001 |
| net need of <i>j</i> × <i>r</i> | 0.607 | 0.250 | 0.010 | 0.774 | 0.221 | 0.001 |

both sexes contribute significantly positive net transfers of subsistence production to their offspring.

Downward net transfers of food from mothers to offspring are significantly positive from the 20s through the 50s, with an all-ages mean of 177 cal d^{−1} and a peak at 1042 cal d^{−1} during the 30s. On average, there is a tendency for mothers to become net recipients from their children beginning in their 60s (this relationship is not significant in the 60s, but significant at *p* = 0.03 in the 70s). Net downward transfers from fathers to their offspring are significant from the 20s through the 60s, with an all-ages mean of 1107 cal d^{−1} and a peak of 1737 cal d^{−1} during the 30s. Mean net transfers from fathers are positive but statistically indistinguishable from zero (*p* = 0.4) in the 70s.

Net transfers of subsistence production from an offspring's parents as a function of offspring age and sex are given in figure 2*b* (electronic supplementary material, table E2). Daughters receive significant net transfers from their parents into the second half of their 20s, with a mean of 437 cal d^{−1} net received, and a peak of 701 cal d^{−1} around age 10. Net transfers between daughters and their parents do not deviate significantly from zero from the mid-30s onward. Sons receive significant net transfers until about age 15, with a mean of 393 cal d^{−1} received and a peak of 792 cal d^{−1} around age 10. Young men in their early 20s are estimated to provide net upward transfers to their parents at a mean rate of 278 cal d^{−1} (*p* = 0.03). Mean net transfers between sons and parents are not significantly different from zero from the mid-20s onward.

The results in figure 2*c* (electronic supplementary material, table E3) support **P2**, that both Tsimane' grandmothers and grandfathers provide significant net transfers to their grandchildren. Grandmothers are estimated to provide a significant mean net of 117 cal d^{−1} to their grandchildren (*p* = 0.002), with a peak of 176 cal d^{−1} during their 40s. Net transfers to grandchildren are significantly positive from grandmothers in their 40s and 50s; in the 60s and 70s, they are positive, but not statistically significant. Net transfers from grandfathers to their grandchildren average 223 cal d^{−1}, with a peak of 337 cal d^{−1} in the 60s. Net transfers from a grandfather to his grandchildren are significantly positive from the 40s through the 70s.

Tsimane granddaughters and grandsons are estimated to receive significant net transfers from their grandparents from birth until roughly age 19 and 15, respectively (figure 2*d*;

electronic supplementary material, table E4). Peak net transfers to grandchildren in the first two decades of life occur around age 10 in both sexes, at around 170 cal d^{−1}. Net transfers to grandchildren are greater when the parents are not alive and co-resident in the same community: grandchildren under 12 receive a net of 90 more calories per day (*p* < 0.01) from their grandparents if their mother is absent, and 60 more calories per day (*p* = 0.03) if their father is absent. The significant net transfers to grandchildren in figure 2*d*, however, are only partly explained by compensation for parental absence, as grandchildren under 12 still receive an average of 164 cal d^{−1} (*p* < 0.001) from grandparents when both parents are present.

Figure 2*e* (electronic supplementary material, table E5) shows that Tsimane husbands provide significant net transfers of food energy to their wives, with a mean net of 273 cal d^{−1} (*p* < 0.001). Net transfers are consistently positive from husbands to wives across life, and significantly positive in more than half of age categories. Flows between husbands and wives are somewhat more even for wives in their 40s and 50s and husbands in their 50s and 60s, with a mean husband → wife net flow of 146 cal d^{−1} (0.12 > *p* > 0.23) during this period.

The net result of exchanges between Tsimane adults and their parents-in-law (i.e. their spouse's parents; figure 2*f*; electronic supplementary material, table E6) are less clearly patterned. Mean net transfers between a mother-in-law and her children's spouses have a tendency to flow upward (mean = 206 cal d^{−1}), an effect that is significant in the all-ages model (*p* = 0.01), but not in the age-stratified model (*p* > 0.05). Mean transfers between fathers-in-law and their children's spouses have a slight but not significant (*p* > 0.1) tendency to occur downward, with a mean net of 67 cal d^{−1}. In figure 2*g* (electronic supplementary material, table E7), daughters- and sons-in-law show a slight tendency to be net receivers from their parents-in-law (83 cal d^{−1} to daughters-in-law, *p* = 0.07, and 69 cal d^{−1} to sons-in-law, *p* = 0.09), although net flows from focal children-in-law are estimated to be upward for some age–sex categories (for example, to parents-in-law from daughters-in-law in their early 30s, *p* = 0.04).

Different results across sex, age and relationship category provide distinct angles on an individual's net contribution to her/his family across life. For example, mothers in their later

Table 2. Mixed-effect models predicting net transfers (calories per day) from older nuclear family i to younger nuclear family j , as a function of familial net need for each relationship category. Model 1 reports the mean net transfer within each relationship type. Models 2 and 3 report the standardized regression coefficient β for the relationship between net need and net transfers for donors and receivers within each relationship category. p -values indicate whether the mean or standardized regression coefficient β deviates significantly from the null expectation of zero.

| family dyad relationship category | n | 1. net transfer | | | 2. relationship between estimated net need and net transfer | | | 3. relationship between measured net need and net transfer | | | | | | | | | |
|-----------------------------------|------|-----------------|------|------------|---|-----------------|-----------------|--|-------|------------|--------|--------|-------|--------|-------|-------|-------|
| | | mean | s.e. | p -value | net need of i | net need of j | net need of i | net need of j | | | | | | | | | |
| | | β | s.e. | p -value | β | s.e. | p -value | β | s.e. | p -value | | | | | | | |
| Par. $i \rightarrow$ child j | 157 | 150.3 | 94.3 | 0.011 | -0.643 | 0.088 | <0.001 | 0.125 | 0.094 | 0.068 | <0.001 | -0.962 | 0.082 | <0.001 | 0.422 | 0.075 | 0.002 |
| Sib. $i \rightarrow$ sib. j | 225 | 113.4 | 91.6 | 0.023 | -0.172 | 0.070 | 0.011 | 0.022 | 0.092 | 0.377 | 0.016 | -0.166 | 0.067 | 0.016 | 0.070 | 0.062 | 0.074 |
| other kin $i \rightarrow j$ | 782 | 47.3 | 87.4 | 0.103 | -0.017 | 0.036 | 0.295 | 0.026 | 0.057 | 0.292 | 0.523 | 0.000 | 0.030 | 0.523 | 0.013 | 0.053 | 0.428 |
| non-kin $i \rightarrow j$ | 2115 | 49.0 | 86.1 | 0.019 | -0.006 | 0.022 | 0.391 | 0.037 | 0.027 | 0.077 | 0.021 | -0.051 | 0.021 | 0.021 | 0.037 | 0.027 | 0.066 |

60s and 70s are estimated to receive net transfers from their adult children (474 cal d^{-1}), while also providing net contributions of around 50 cal d^{-1} to their grandchildren. Sons in their early 20s who provide a direct net of 278 cal d^{-1} to their parents also receive 82 cal d^{-1} from their grandparents. While mothers-in-law tend to be net receivers on an individual-to-individual basis, children-in-law tend to be net receivers from parents-in-law when the contributions of fathers- and mothers-in-law are considered together.

(b) Transfers between nuclear families

Table 1 presents the analysis of food sharing between Tsimane' nuclear families based on mean genetic relatedness and net caloric need. The results show first, that relatedness is a robust independent predictor of net transfers from older to younger families; and second, that the effects of familial net need are consistent with the theoretical predictions.

In support of P3, there is a significant negative relationship between net transfers from family i to family j , and the interaction between family i 's net need and relatedness. Thus, the higher the productivity and the lower the consumption requirements of i , the greater the net transfer from i to j ; the size of this effect, moreover, increases with increasing relatedness. Supporting P4, the relationship between net transfers and the interaction between family j 's net need and relatedness is significantly positive. Thus, the lower the productivity and the higher the consumption requirements of j , the greater the net transfer to j , an effect that increases with increasing relatedness.

The results in table 1 show that among closely related families, holding need constant, on average older families make net transfers to younger families. These net transfers from older to younger increase with the number of unproductive mouths in the younger household, but decrease with those in the older household. For the minority of closely related dyads in which the older family has more unproductive consumers than the younger, positive net flows are predicted to occur in the opposite direction, with the younger family providing net transfers to the older; in either case, energy flows to the demographically needier of the two families.

In table 1, the association of need with transfers, independent of relatedness, is mildly in the direction of net flows towards greater need (i.e. negative for the need of i and positive for the need of j). This is somewhat more pronounced when using the measured net need variable. These effects, however, are not statistically significant ($p > 0.12$). This suggests that neither donor nor recipient need alone is sufficient to produce substantial net transfers in the Tsimane sample; instead, transfers are predominantly directed from less needy to more needy kin according to the degree of kinship.

Table 2 breaks down the between-family analysis into four categories of relationship: parent-offspring pairs, sibling-sibling pairs, all other kin pairs (dyads with $r > 0$ other than parent-offspring and siblings) and non-kin pairs ($r = 0$). The analysis shows that the largest net transfers and effects of need occur between the families of parents and their adult offspring. These results reflect net investments in adult offspring and grandoffspring, and the responsiveness of these investments to both offspring/grandoffspring need and parental/grandparental surplus. Table 2 also indicates that significant net transfers occur from older to younger siblings and their families, including nieces and nephews. The

effects of net need on transfers between the families of adult siblings are statistically significant for donor but not recipient need (i.e. for differences in c but not b).

Table 2 shows little to no net intergenerational transfers (or effects of need) between more distantly related nuclear families. Between non-kin, there is some evidence of mean net downward flows from older to younger families, and some responsiveness to need, particularly when using the measured net need of families ($p \geq 0.02$). The effect sizes, however, are small ($\beta < 0.06$), and not statistically significant when employing the instrumental estimated net need variable.

In tables 1 and 2, it is reassuring that both the estimated and measured net need variables produce similar parameter estimates, suggesting that the main results are robust to endogeneity and measurement error (see the electronic supplementary material, S2.2). In both tables, the estimated effect sizes tend to be greater for measured need than estimated need. The interpretation of these differences is difficult; on the one hand, they may indicate that net transfers are sensitive to true heterogeneity in household productivity (above and beyond that associated with age and demographic composition), or medium-term variability in fortune captured during the sampling window; on the other hand, they may simply result from the endogenous, structural relationship between measured net productivity and net transfers discussed in electronic supplementary material, S2.2.

5. Discussion

This study shows that kinship and life-history jointly predict patterns of intergenerational investment in a small-scale human subsistence economy. The results show that Tsimane' parents and grandparents are economically productive and provide net economic contributions to kin into the seventh decade of life. Between households, the net transfer of resources is predicted by the interaction of inclusive fitness interests with differential productivity and need. Households with higher productivity and fewer dependents provide net transfers to closely related, usually younger, households with lower productivity and more dependents.

These results are important, given that downward flows between generations could happen without respect to relatedness, and that kin selection alone does not dictate why flows should be downward. This is the first paper to fully unite the time-path of production with inclusive fitness theory and test the unified model in an empirical analysis. The data indicate that flows across Tsimane' networks are exquisitely patterned, more so than either theory alone would predict.

This analysis supports life-history models suggesting that human demographic characteristics—long lifespan, slow development, high fertility and menopause—and intergenerational transfers have co-evolved in the history of our lineage [4–7,42,43]. Models emphasizing learning and embodied capital hypothesize that the movement of hominins into a production niche favouring early-life investments in brain and skill development was a primary driver behind the distinctiveness of the human life-history, including the extent and duration of intergenerational provisioning [4,8,17,21,44,45]. We have shown that transfers can be predicted on the basis of differential productivity, which depends on the importance of learning, in interaction with kinship.

The connection between the life-history of economic production and the transfers observed here provides concrete support for theories emphasizing the importance of skill development for the evolution of animal life histories and breeding systems more generally [45–49]. These insights are reinforced by associations between the skill requirements of food acquisition and transfers of food from adults to offspring among non-human primates [50–54]. Comparative tests are needed to evaluate the importance of learning in fostering the co-occurrence of 'slow' life histories and high levels of investment in offspring from parents and other kin (i.e. cooperative breeding), relative to other factors, such as the importance of limited and defensible resources (e.g. territories, dens or burrows) [55,56].

The theory developed here can be interpreted as a generalization of classic parental investment theory [57–59]. The results of the analysis support this generalization by showing that Tsimane' invest in their grandchildren, siblings, nieces and nephews in ways that take into account their life-stage and relative caloric need. The strength of these effects declines with decreasing genetic relatedness, as predicted by the theory.

While net downward transfers predominate within Tsimane extended families, net upward transfers are observed across a small number of relationship types: from adult children to mothers over age 70; from children-in-law to mothers-in-law, particularly over age 60; from sons in their early 20s to parents; and from daughters-in-law in their early 30s to parents-in-law. Importantly, the between-family analysis reveals that transfers are not unconditional, but rather depend crucially on the relative need of nuclear units within the extended family. Older parents who still support a large number of dependents, for example, are estimated to receive net contributions from their less needy, more productive adult children. On the whole, however, since younger families (with parents under age 30) tend to have relatively lower productivity and higher dependent need (figure 1*b*), resources on average tend to flow from older to younger nuclear families.

The current empirical study focuses entirely on the redistribution of subsistence foods from primary producers to their consumers. As such, contributions to a family's economic/nutritional well-being outside primary production, such as food processing and breastfeeding, are not represented. Similarly structured studies that account for mothers' contributions to children through breastfeeding are needed to complement the measures of transfers of primary production reported in electronic supplementary material, tables E1 and E2. Accounting for effort towards food processing and other complementary roles (as in [7,60]) is similarly worthwhile, but entails its own challenges. In addition to immediate levels of effort and performance, it is important to take into account previous investments in embodied capital necessary to successfully complete each task. For example, if a surgeon has to both transplant a heart and ensure that her children are cared for, a babysitter cannot take equal credit for the heart transplant, although both may have proximately invested roughly equal amounts of time/energy to achieve the joint goal.

The evolutionary and ecological theory for the structure of intergenerational transfers introduced here produces tractable predictions for variation in other populations. While the form of the production curves across small-scale human groups is remarkably general [8,9,17–20,60], shifts in the

timing of skill acquisition, physical ability and returns to consumption should be associated with variation in the direction and volume of transfers through specific phases of life. The economic productivity of children and adolescents, for example, has been shown to vary as a function of ecology, owing to differences in predation risk, gains to learning, availability of easy-to-acquire resources, and ability to contribute labour to cultivation [60–62].

The life cycle of aggregate net production within nuclear families may also differ according to socioecology. Data on the caloric productivity of Ache nuclear families [9], for example, suggest a different pattern from that of the Tsimane' shown in figure 1*b*. On average, young Ache families appear to produce net economic surpluses, whereas older families (with parents in their 40s and 50s) appear to run net economic deficits. This may be attributable to lower early-age fertility and/or lower old-age productivity among the Ache compared to the Tsimane'. The timing, direction and

volume of intergenerational transfers between families may be expected to differ as a result.

Ethics statement. Methods were evaluated and approved by institutional review boards at the University of New Mexico and UC Santa Barbara; permission for research was established with the Gran Consejo Tsimane' and with each community, and informed consent was obtained from each individual in the sample.

Data accessibility. The data used in this analysis have been anonymized and made publicly available through the Dryad data repository at <http://datadryad.org/review?doi=doi:10.5061/dryad.6m98m>.

Acknowledgements. Many thanks to the Tsimane' community members, research assistants and THLHP team members who contributed to this study, and to Ann Caldwell Hooper, Samuel Bowles, Kim Hill, Jane Lancaster, Jim Brown, Jim Boone, Paul Seabright, Adrian Jaeggi, Christina Gomes, Hanne van der Iest, David Nolin, Bret Beheim, Jonathan Stieglitz and two anonymous reviewers for helpful input and feedback.

Funding statement. This work was supported by NSF grant BCS-0422690, NIH/NIA grants R01AG024119–01 and 2P01AG022500–06A1, and the Santa Fe Institute.

References

- Bogin BA, Smith BH. 1996 Evolution of the human life cycle. *Am. J. Hum. Biol.* **8**, 703–716. (doi:10.1002/(SICI)1520-6300(1996)8:6<703::AID-AJHB2>>3.0.CO;2-U)
- Curven M, Kaplan H. 2007 Longevity among hunter–gatherers: a cross-cultural examination. *Popul. Dev. Rev.* **33**, 321–365. (doi:10.1111/j.1728-4457.2007.00171.x)
- Alberts SC *et al.* 2013 Reproductive aging patterns in primates reveal that humans are distinct. *Proc. Natl Acad. Sci. USA* **110**, 13 440–13 445. (doi:10.1073/pnas.1311857110)
- Kaplan HS, Robson AJ. 2002 The emergence of humans: the coevolution of intelligence and longevity with intergenerational transfers. *Proc. Natl Acad. Sci. USA* **99**, 10 221–10 226. (doi:10.1073/pnas.152502899)
- Hawkes K. 2003 Grandmothers and the evolution of human longevity. *Am. J. Hum. Biol.* **15**, 380–400. (doi:10.1002/ajhb.10156)
- Lee RD. 2008 Sociality, selection, and survival: simulated evolution of mortality with intergenerational transfers and food sharing. *Proc. Natl Acad. Sci. USA* **105**, 7124–7128. (doi:10.1073/pnas.0710234105)
- Kramer KL, Ellison PT. 2010 Pooled energy budgets: resituating human energy-allocation trade-offs. *Evol. Anthropol.* **19**, 136–147. (doi:10.1002/evan.20265)
- Kaplan H. 1997 The evolution of the human life course. In *Between Zeus and the Salmon: the biodemography of longevity* (eds KW Wachter, E Finch), pp. 175–211. Washington, DC: National Academy Press.
- Hill K, Hurtado AM. 2009 Cooperative breeding in South American hunter–gatherers. *Proc. R. Soc. B* **276**, 3863–3870. (doi:10.1098/rspb.2009.1061)
- Curven M, Stieglitz J, Hooper PL, Gomes C, Kaplan H. 2012 From the womb to the tomb: the role of transfers in shaping the evolved human life history. *Exp. Gerontol.* **47**, 807–813. (doi:10.1016/j.exger.2012.05.006)
- Rogers AR. 1993 Why menopause? *Evol. Ecol.* **7**, 406–420. (doi:10.1007/BF01237872)
- Hamilton W. 1964 The genetical evolution of social behaviour. *J. Theor. Biol.* **7**, 1–16. (doi:10.1016/0022-5193(64)90038-4)
- Robson AJ, Kaplan HS. 2003 The evolution of human life expectancy and intelligence in hunter–gatherer economies. *Am. Econ. Rev.* **93**, 150–169. (doi:10.1257/000282803321455205)
- Kaplan HS, Robson AJ. 2009 We age because we grow. *Proc. R. Soc. B* **276**, 1837–1844. (doi:10.1098/rspb.2008.1831)
- Lee RD. 2003 Rethinking the evolutionary theory of aging: transfers, not births, shape senescence in social species. *Proc. Natl Acad. Sci. USA* **100**, 9637–9642. (doi:10.1073/pnas.1530303100)
- West SA, Griffin AS, Gardner A. 2007 Evolutionary explanations for cooperation. *Curr. Biol.* **17**, R661–R672. (doi:10.1016/j.cub.2007.06.004)
- Kaplan H, Hill K, Lancaster J, Hurtado AM. 2000 A theory of human life history evolution: diet, intelligence, and longevity. *Evol. Anthropol.* **9**, 156–185. (doi:10.1002/1520-6505(2000)9:4<156::AID-EVAN5>>3.0.CO;2-7)
- Curven M, Kaplan H. 2006 Determinants of time allocation to production across the lifespan among the Machiguenga and Piro Indians of Peru. *Hum. Nat.* **17**, 1–49. (doi:10.1007/s12110-006-1019-6)
- Marlowe F. 2010 *The Hadza: hunter–gatherers of Tanzania*. Berkeley, CA: University of California Press.
- Howell N. 2010 *Life histories of the Dobe !Kung*. Berkeley, CA: University of California Press.
- Kaplan H, Curven M, Winking J, Hooper PL, Stieglitz J. 2010 Learning, menopause, and the human adaptive complex. *Ann. NY Acad. Sci.* **1204**, 30–42. (doi:10.1111/j.1749-6632.2010.05528.x)
- Winterhalder B, Lu F, Tucker B. 1999 Risk-sensitive adaptive tactics: models and evidence from subsistence studies in biology and anthropology. *J. Archaeol. Res.* **7**, 301–348. (doi:10.1007/BF02446047)
- Curven M. 2004 To give and to give not: the behavioral ecology of human food transfers. *Behav. Brain Sci.* **27**, 543–559. (doi:10.1017/S0140525X04000123)
- Jaeggi AV, Curven M. 2013 Natural cooperators: food sharing in humans and other primates. *Evol. Anthropol.* **22**, 186–195. (doi:10.1002/evan.21364)
- Betzig LL, Turke PW. 1986 Food sharing on Ifaluk. *Curr. Anthropol.* **27**, 397–400. (doi:10.1086/203457)
- Curven M, Allen-Arave W, Hill K, Hurtado AM. 2001 Reservation food sharing among the Ache of Paraguay. *Hum. Nat.* **12**, 273–297. (doi:10.1007/s12110-001-1000-3)
- Patton JQ. 2005 Meat sharing for coalitional support. *Evol. Hum. Behav.* **26**, 137–157. (doi:10.1016/j.evolhumbehav.2004.08.008)
- Ziker J, Schnegg M. 2005 Food sharing at meals. *Hum. Nat.* **16**, 178–210. (doi:10.1007/s12110-005-1003-6)
- Hames R, McCabe C. 2007 Meal sharing among the Ye'kwana. *Hum. Nat.* **18**, 1–21. (doi:10.1007/BF02820843)
- Koster J. 2011 Interhousehold meat sharing among Mayangna and Miskito horticulturalists in Nicaragua. *Hum. Nat.* **22**, 394–415. (doi:10.1007/s12110-011-9126-4)
- Curven M, Hill K, Kaplan H, Hurtado A, Lyles R. 2000 Food transfers among Hiwi foragers of Venezuela: tests of reciprocity. *Hum. Ecol.* **28**, 171–218. (doi:10.1023/A:1007067919982)
- Bowles S, Posel D. 2005 Genetic relatedness predicts South African migrant workers' remittances to their families. *Nature* **434**, 380–383. (doi:10.1038/nature03420)
- Allen-Arave W, Curven M, Hill K. 2008 Reciprocal altruism, rather than kin selection, maintains

- nepotistic food transfers on an Ache reservation. *Evol. Hum. Behav.* **29**, 305–318. (doi:10.1016/j.evolhumbehav.2008.03.002)
34. Shenk MK, Hooper PL, Gurven M, Kaplan H. 2006 The Tsimane' life history project. *Anthropol. News* **47**, 52–53. (doi:10.1525/an.2006.47.9.52.2)
35. Hooper PL. 2011 *The structure of energy production and redistribution among Tsimane forager–horticulturalists*. PhD thesis, University of New Mexico.
36. Nordenskiöld E. 1915 *Forskningar och äventyr i Sydamerika*. Stockholm, Sweden: Albert Bonniers Förlag.
37. Godoy R *et al.* 2009 Moving beyond a snapshot to understand changes in the well-being of native Amazonians. *Curr. Anthropol.* **50**, 563–573. (doi:10.1086/599983)
38. Gurven M, Kaplan H, Zelada Supa A. 2007 Mortality experience of Tsimane Amerindians of Bolivia: regional variation and temporal trends. *Am. J. Hum. Biol.* **19**, 376–398. (doi:10.1002/ajhb.20600)
39. Gurven M *et al.* 2010 Domestication alone does not lead to inequality. *Curr. Anthropol.* **51**, 49–64. (doi:10.1086/648587)
40. R Core Team. 2014 *R: a language and environment for statistical computing*. Vienna, Austria: R Foundation for Statistical Computing.
41. Bates D, Maechler M, Bolker B. 2012 lme4: Linear mixed-effects models using S4 classes. See <http://cran.r-project.org/web/packages/lme4>.
42. Hawkes K, O'Connell JF, Jones NB, Alvarez H, Charnov EL. 1998 Grandmothering, menopause, and the evolution of human life histories. *Proc. Natl Acad. Sci. USA* **95**, 1336–1339. (doi:10.1073/pnas.95.3.1336)
43. Hawkes K. 2010 How grandmother effects plus individual variation in frailty shape fertility and mortality: guidance from human–chimpanzee comparisons. *Proc. Natl Acad. Sci. USA* **107**, 8977–8984. (doi:10.1073/pnas.0914627107)
44. Hooper PL, Gurven M, Kaplan HS. 2014 Social and economic underpinnings of human biodemography. In *Sociality, hierarchy, health: comparative biodemography* (eds M Weinstein, MA Lane), pp. 169–195. Washington, DC: National Academies Press.
45. Schuppli C, Isler K, van Schaik CP. 2012 How to explain the unusually late age at skill competence among humans. *J. Hum. Evol.* **63**, 843–850. (doi:10.1016/j.jhevol.2012.08.009)
46. Brown JL. 1987 *Helping and communal breeding in birds: ecology and evolution*. Princeton, NJ: Princeton University Press.
47. Heinsohn RG. 1991 Slow learning of foraging skills and extended parental care in cooperatively breeding white-winged choughs. *Am. Nat.* **137**, 864–881. (doi:10.1086/285198)
48. Ross C, Jones KE. 1999 Socioecology and the evolution of primate reproductive rates. In *Comparative Primate Socioecology* (ed. PC Lee), pp. 73–110. Cambridge, UK: Cambridge University Press.
49. Langen TA. 2000 Prolonged offspring dependence and cooperative breeding in birds. *Behav. Ecol.* **11**, 367–377. (doi:10.1093/beheco/11.4.367)
50. Silk JB. 1978 Patterns of food sharing among mother and infant chimpanzees at Gombe National Park, Tanzania. *Folia Primatol.* **29**, 129–141. (doi:10.1159/000155835)
51. Price EC, Feistner AT. 1993 Food sharing in lion tamarins: tests of three hypotheses. *Am. J. Primatol.* **31**, 211–221. (doi:10.1002/ajp.1350310306)
52. Nishida T, Turner LA. 1996 Food transfer between mother and infant chimpanzees of the Mahale Mountains National Park, Tanzania. *Int. J. Primatol.* **17**, 947–968. (doi:10.1007/BF02735296)
53. Fragaszy DM, Feuerstein JM, Mitra D. 1997 Transfers of food from adults to infants in tufted capuchins (*Cebus apella*). *J. Comp. Psychol.* **111**, 194. (doi:10.1037/0735-7036.111.2.194)
54. Jaeggi AV, Van Schaik CP. 2011 The evolution of food sharing in primates. *Behav. Ecol. Sociobiol.* **65**, 2125–2140. (doi:10.1007/s00265-011-1221-3)
55. Jennions MD, Macdonald DW. 1994 Cooperative breeding in mammals. *Trends Ecol. Evol.* **9**, 89–93. (doi:10.1016/0169-5347(94)90202-X)
56. Hatchwell BJ, Komdeur J. 2000 Ecological constraints, life history traits and the evolution of cooperative breeding. *Anim. Behav.* **59**, 1079–1086. (doi:10.1006/anbe.2000.1394)
57. Trivers RL. 1972 Parental investment and sexual selection. In *Sexual Selection and the Descent of Man, 1971-1971* (ed. B Campbell), pp. 136–179. Chicago, IL: Aldine-Atherton.
58. Smith CC, Fretwell SD. 1974 The optimal balance between size and number of offspring. *Am. Nat.* **108**, 499–506. (doi:10.1086/282929)
59. Clutton-Brock TH. 1991 *The evolution of parental care*. Princeton, NJ: Princeton University Press.
60. Kramer K. 2005 *Maya children: helpers at the farm*. Cambridge, MA: Harvard University Press.
61. Jones NB, Hawkes K, Draper P. 1994 Foraging returns of !Kung adults and children: why didn't !Kung children forage? *J. Anthropol. Res.* **50**, 217–248.
62. Bock J. 2002 Learning, life history, and productivity: children's lives in the Okavango Delta, Botswana. *Hum. Nat.* **13**, 161–197. (doi:10.1007/s12110-002-1007-4)