

Chapman University

Chapman University Digital Commons

Wesley F. Diedrich First World War
Correspondence Collection

CAWL Archives: First World War

1-1-1919

1919, Wesley to Family

Wesley F. Diedrich

Follow this and additional works at: https://digitalcommons.chapman.edu/wfdiedrich_collection

Recommended Citation

Diedrich, Wesley F., "1919, Wesley to Family" (1919). *Wesley F. Diedrich First World War Correspondence Collection*. 55.

https://digitalcommons.chapman.edu/wfdiedrich_collection/55

This Letter is brought to you for free and open access by the CAWL Archives: First World War at Chapman University Digital Commons. It has been accepted for inclusion in Wesley F. Diedrich First World War Correspondence Collection by an authorized administrator of Chapman University Digital Commons. For more information, please contact laughtin@chapman.edu.

1919, Wesley to Family

Keywords

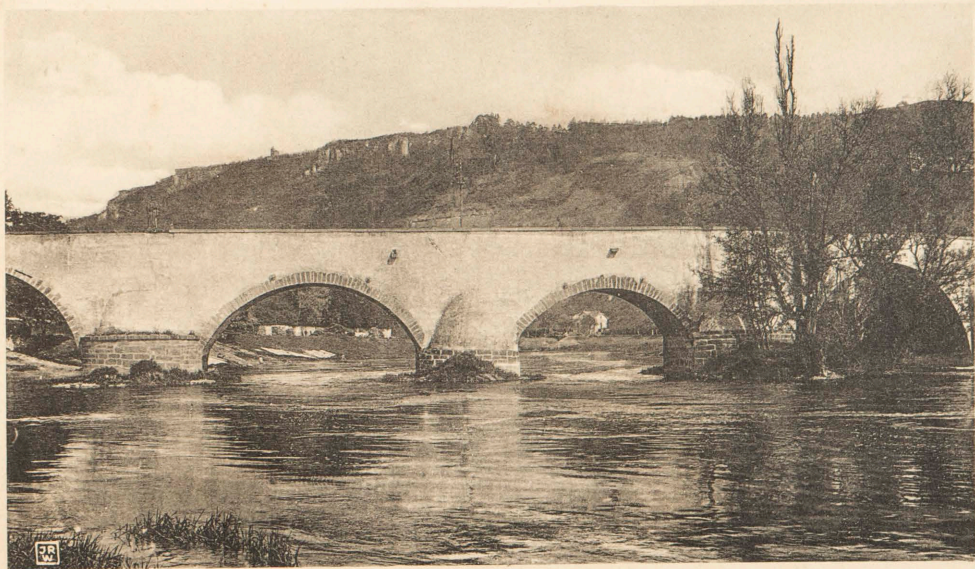
U.S.A., U.S. Postal Service, Soldiers, Post Card, correspondence, Luxembourg, Foreign Occupation, Western Front, civilians, military occupation, landscapes, sight-seeing, Germany, Echternach

Identifier

2014.160.w.r_ Diedrich _worldwarone_missing-missing-missing_004

Comments

An exact date is not known for this letter. The year listed is an estimation and may not be accurate.



Echternach

Die Sauerbrücke

The river is the
line between Lux.
& Germany the
hill in the
background
is Germany

[Diedrich Correspondence #4-Postcard]

[[Front]]

[[image- sepia photograph of a stone bridge with arches running over a river. A hill and houses in the background beyond the bridge]]

[[image- bottom left: insignia, "JRW"]]

[[text- Echternach]]

[[text- Die Sauerbrücke]]

[[Back]]

The river is the
line between Lux.
& Germany the
hill in the
background
is Germany.

[[vertical text on left- Verlag J.R. Waeger, Photog., Echternach. 105]]