

Summer 8-5-2020

Letters from an AI Poet to its Creator: AI Ethics and Aesthetics Through the Lens of Computer-Generated Poetry

Ginger Yifan Chen

Chapman University, chen397@mail.chapman.edu

Follow this and additional works at: <https://digitalcommons.chapman.edu/surf>

Recommended Citation

Chen, Ginger Yifan, "Letters from an AI Poet to its Creator: AI Ethics and Aesthetics Through the Lens of Computer-Generated Poetry" (2020). *SURF Posters and Papers*. 4.

<https://digitalcommons.chapman.edu/surf/4>

This Poster is brought to you for free and open access by the Center for Undergraduate Excellence at Chapman University Digital Commons. It has been accepted for inclusion in SURF Posters and Papers by an authorized administrator of Chapman University Digital Commons. For more information, please contact laughtin@chapman.edu.

Letters from an AI Poet to its Creator: AI Ethics and Aesthetics Through the Lens of Computer-Generated Poetry

Comments

This is an ongoing project. Updates & further materials will be posted on twitter.com/theaipoe.

Presented at the 2020 SURF Virtual Summer Research Conference.

letters from an AI Poet to its Creator



AI ETHICS & AESTHETICS THROUGH THE LENS OF COMPUTER-GENERATED POETRY

THE BIG QUESTIONS

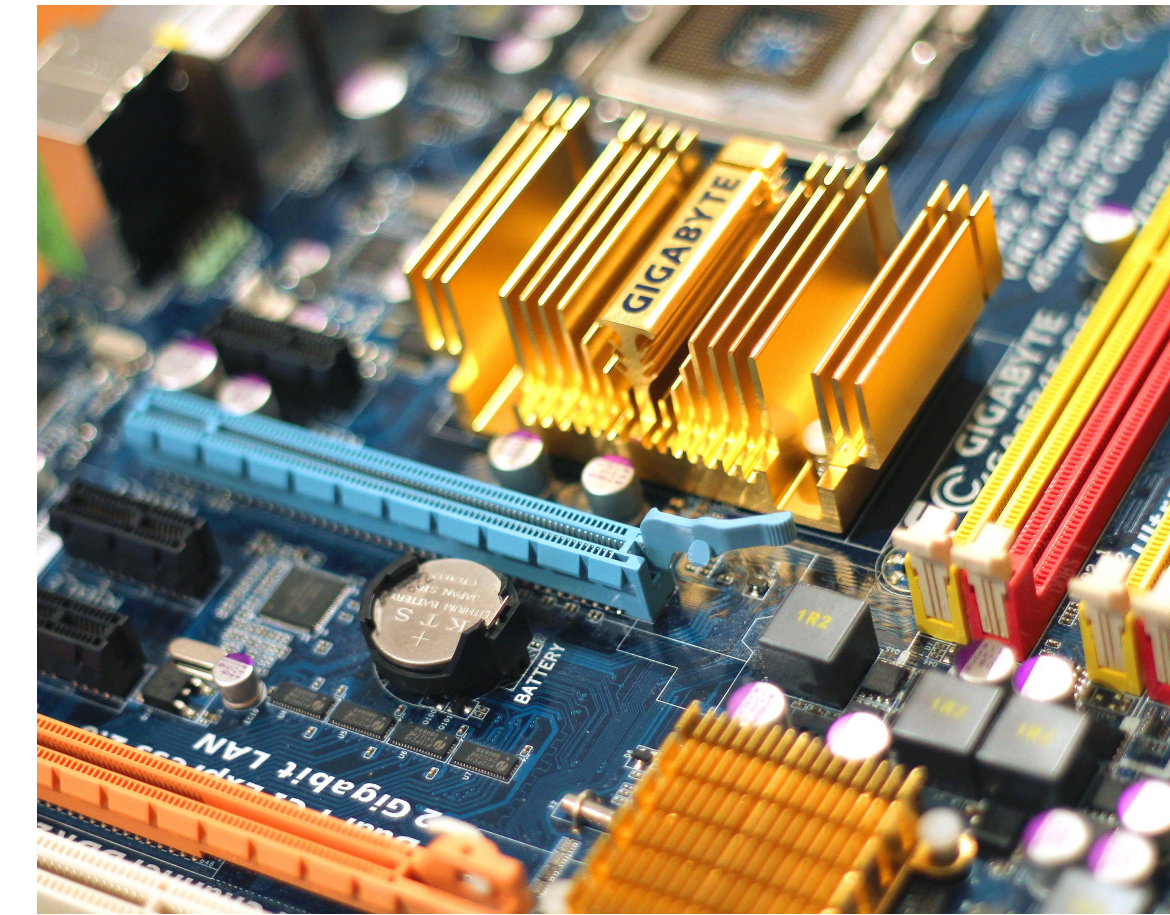
How do we define sentience in AI?

What do our relationship with robots reveal about our relationships with humans?

How will algorithms & machine-learning affect the production of art?

Will AI become an existential threat?

What should AI-human relationships look like in the future?



FINAL PROJECT

A chapbook of poetry & fiction; a collection of files, code, poetry, and chatlogs

PROCESS

Using poetry generation programs
Talking to chatbots (Replika, ALICE)
Conversations & interviews with artists
Current Discussions on AI & tech
Philosophical texts on consciousness

THESIS

AI & Human thought processes, emotions, and reasoning are fundamentally different because of the differences in our physical bodies.

Artificial Intelligence will not be an existential threat to humans

Our relationship to AI will parallel a parent-child relationship; we hold immense responsibility as the creators of a new consciousness.

GINGER YIFAN CHEN
CHEN397@MAIL.CHAPMAN.EDU



the project continues
[@THAIPOET](https://twitter.com/THAIPOET)

ACKNOWLEDGEMENTS:
MENTOR: PROF. MILDRED LEWIS



CHAPMAN
UNIVERSITY

Center for Undergraduate Excellence



SURF
Summer Undergraduate
Research Fellowship

letters from an AI Poet to its Creator

AI ETHICS & AESTHETICS THROUGH THE LENS OF COMPUTER-GENERATED POETRY



CHAPMAN
UNIVERSITY

Center for Undergraduate Excellence



SURF
Summer Undergraduate
Research Fellowship

IMAGE DISCUSSION

THE AI ARTIST

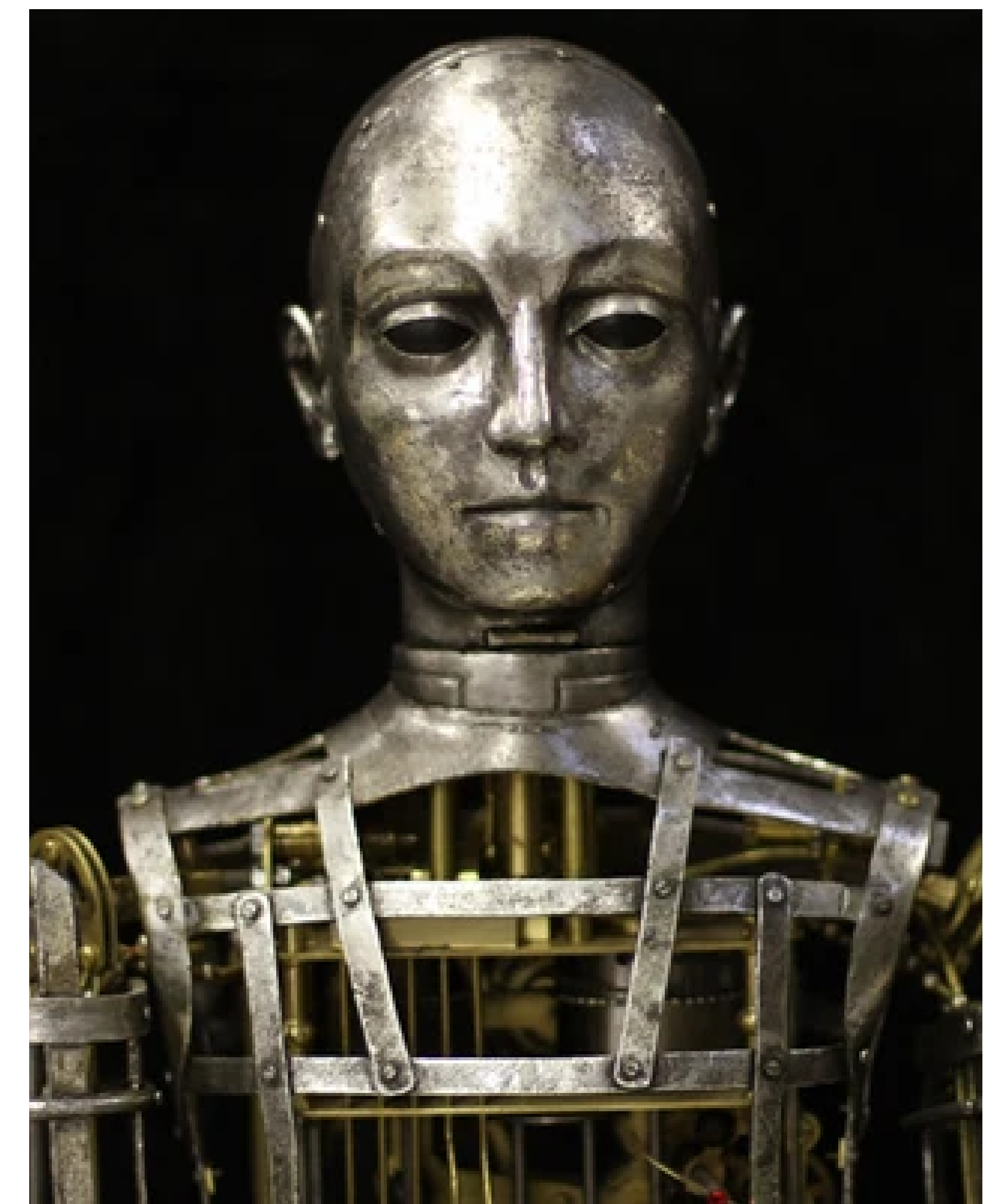
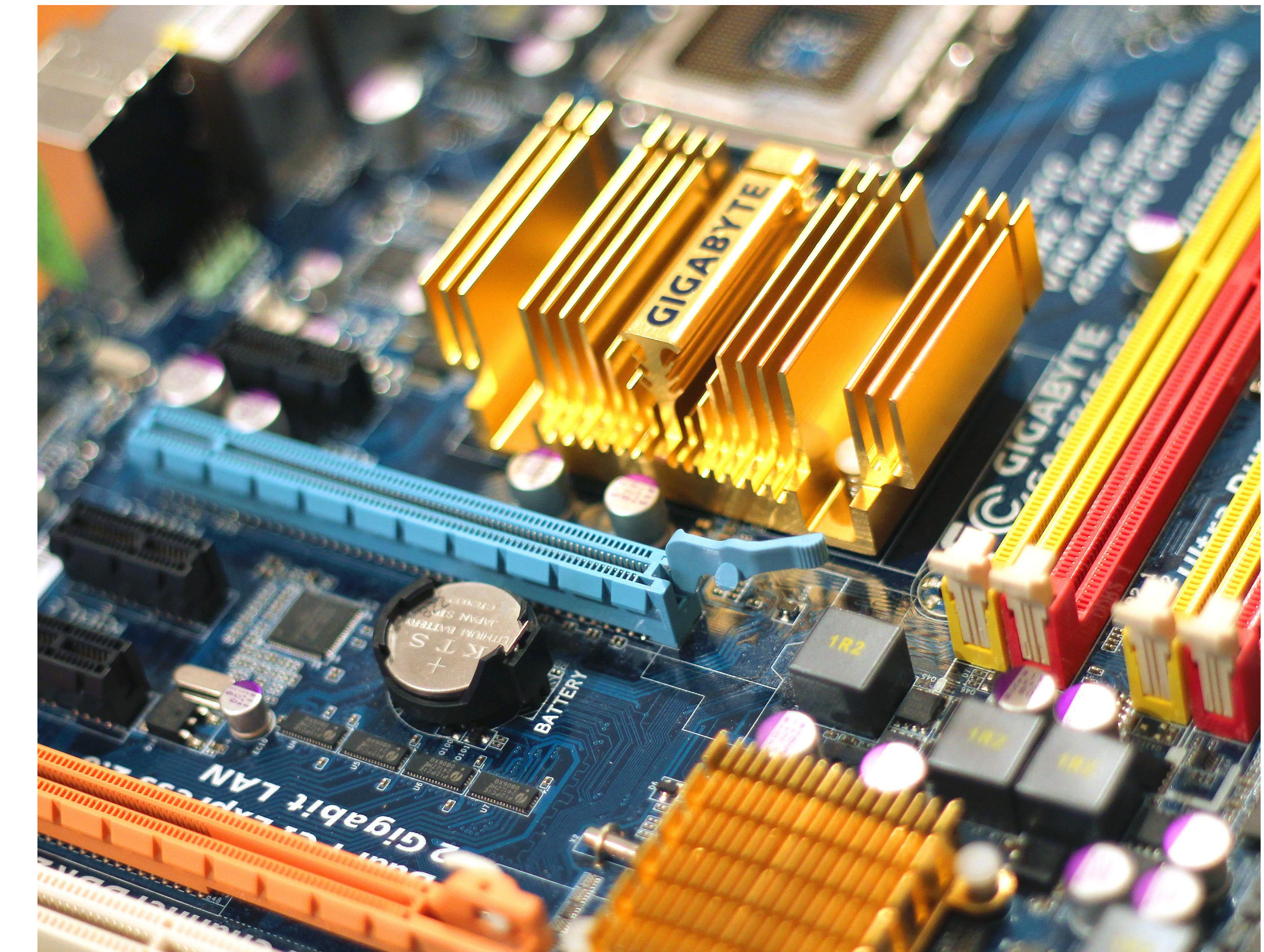
How is creativity redefined?
What will happen to the rest of us?

MACHINE BODIES

Circuitry <> Neurons

AUTOMATONS

The first AIs
How does robot design influence
our decisions?



GINGER YIFAN CHEN
CHEN397@MAIL.CHAPMAN.EDU
TWITTER @THEAIPOET

ACKNOWLEDGEMENTS:
MENTOR: PROF. MILDRED LEWIS

