
Spring 5-14-2015

Exploring EGR-1 as a Master Regulator of Prostate Field Cancerization

Kristin Gabriel

Chapman University, gabri110@mail.chapman.edu

Marco Bisoffi

Chapman University, bisoffi@chapman.edu

Follow this and additional works at: https://digitalcommons.chapman.edu/cusrd_abstracts

 Part of the [Cancer Biology Commons](#), and the [Reproductive and Urinary Physiology Commons](#)

Recommended Citation

Gabriel, Kristin and Bisoffi, Marco, "Exploring EGR-1 as a Master Regulator of Prostate Field Cancerization" (2015). *Student Scholar Symposium Abstracts and Posters*. 137.
https://digitalcommons.chapman.edu/cusrd_abstracts/137

This Poster is brought to you for free and open access by the Center for Undergraduate Excellence at Chapman University Digital Commons. It has been accepted for inclusion in Student Scholar Symposium Abstracts and Posters by an authorized administrator of Chapman University Digital Commons. For more information, please contact laughtin@chapman.edu.



Exploring EGR-1 as a Master Regulator of Prostate Field Cancerization

Kristin N. Gabriel and Marco Bisoffi

Chapman University, Schmid College of Science and Technology, Biochemistry and Molecular Biology, Orange, CA

Support: Undergraduate Student Scholarly/Creative Grant from the Office of Undergraduate Research

BACKGROUND

Demographics of prostate cancer:

- 2nd leading cause of cancer-related death of men in USA
- 30,000 men die each year (one death every 17 minutes)
- 80% men before the age of 80 are diagnosed
- 233,000 men are diagnosed each year [1]

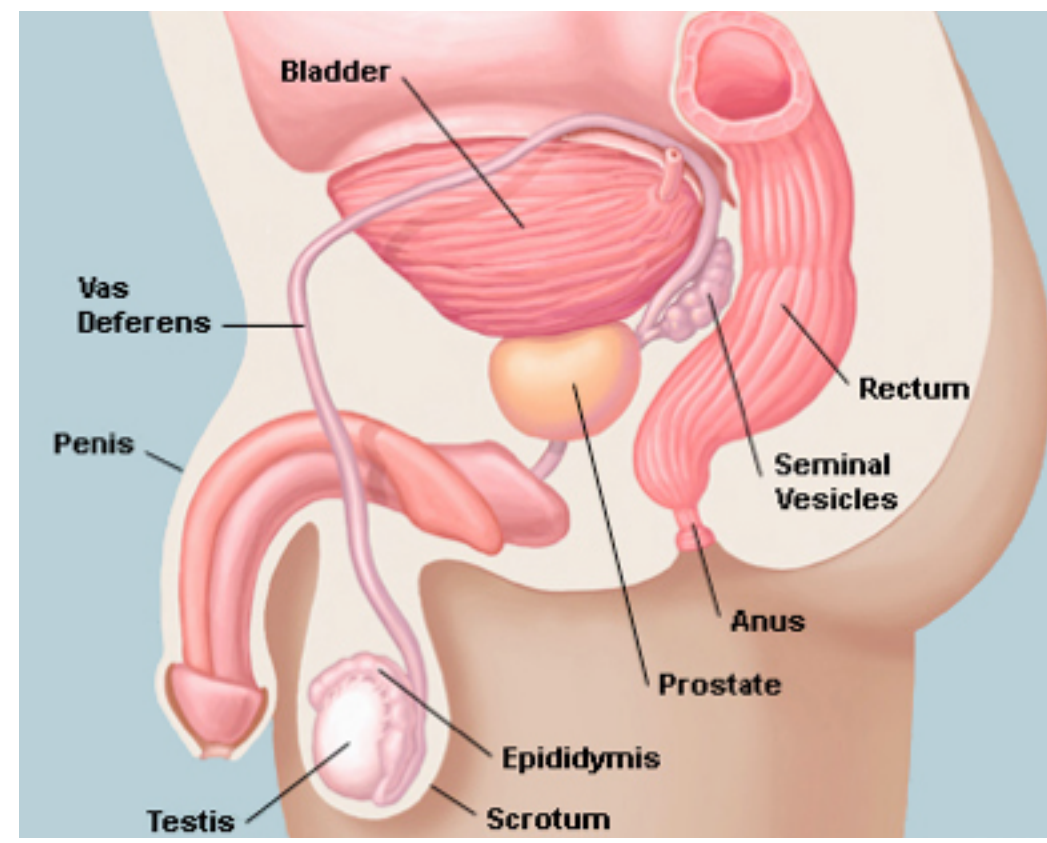


Figure 1. The prostate is a walnut sized gland found in males that is located below the bladder.

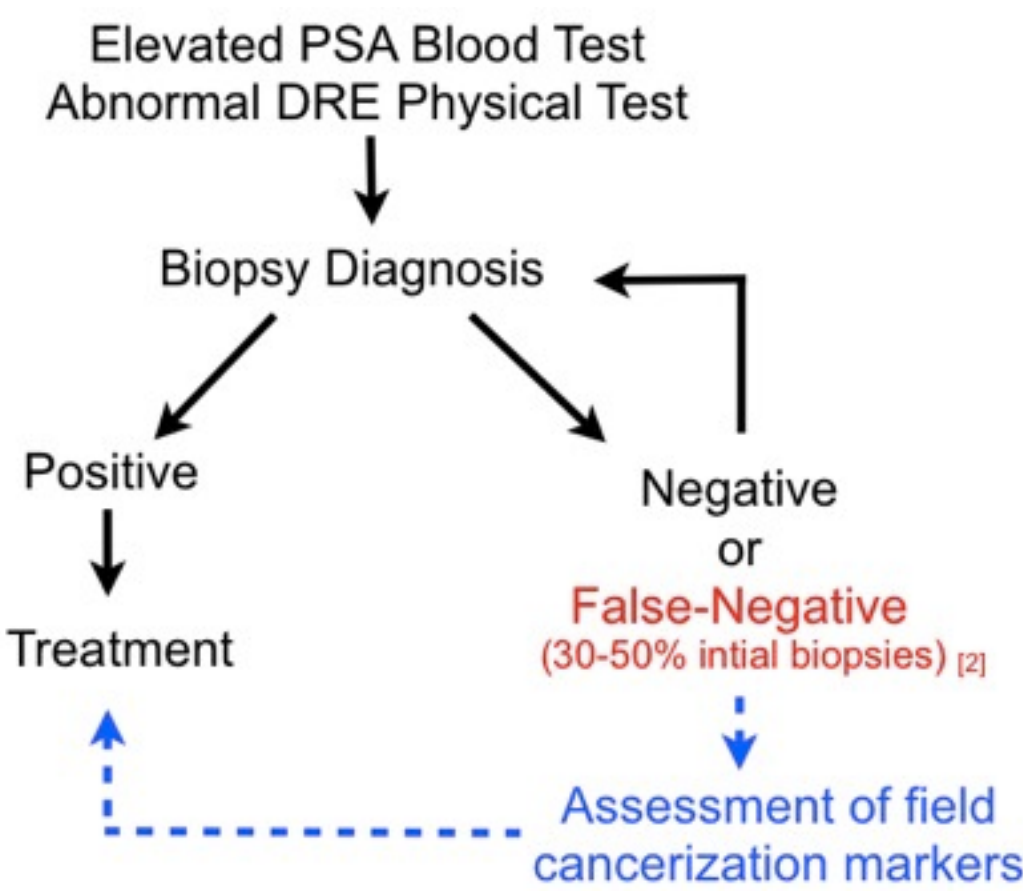


Figure 2. Improved diagnosis of prostate cancer involves markers of field cancerization.

Field Cancerization: Molecular alterations in structurally intact cells residing in histologically normal tissues adjacent to tumors [3]

Significance: Increase clinically informative area as it pertains to prostate biopsies for confirmatory diagnosis of cancer [4]

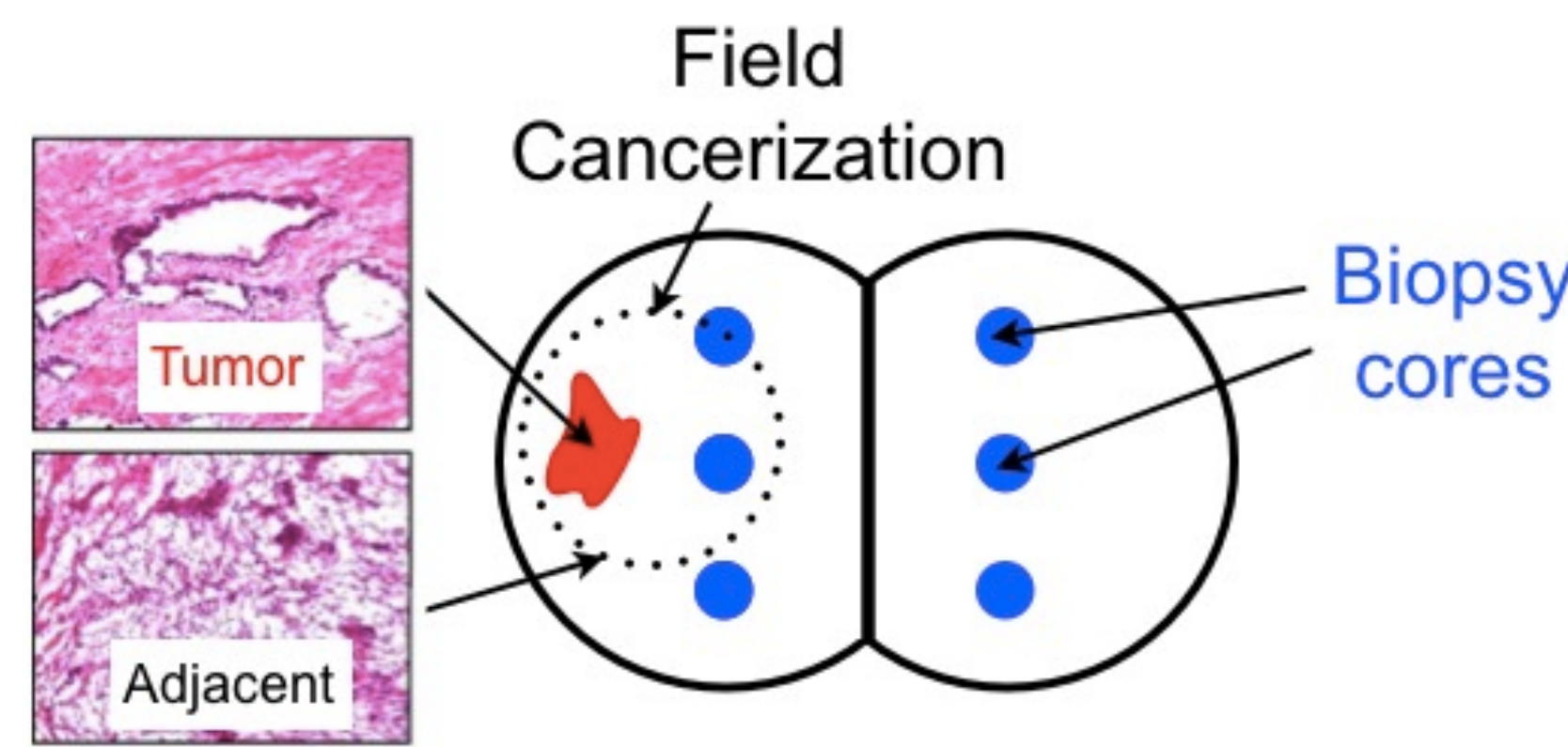


Figure 3. Avoiding false negative biopsies through the use of markers of field cancerization. (A) Biopsy cores (blue circles) miss the tumor foci (red irregular structure). (B) The field associated with the tumor (dotted circle) is detected by the biopsies (blue circles).

Function

- Our lab identified four protein factors as markers of field cancerization [5,6]
- FAS** controls cell survival and apoptosis
- MIC-1** controls cell inflammation
- PDGF-A** controls cell survival, growth, and apoptosis
- EGR-1** controls cancer cell metabolism

QUESTION

Is EGR-1 a master regulator of prostate field cancerization?

PURPOSE: understand field cancerization on the molecular level by identifying function pathways

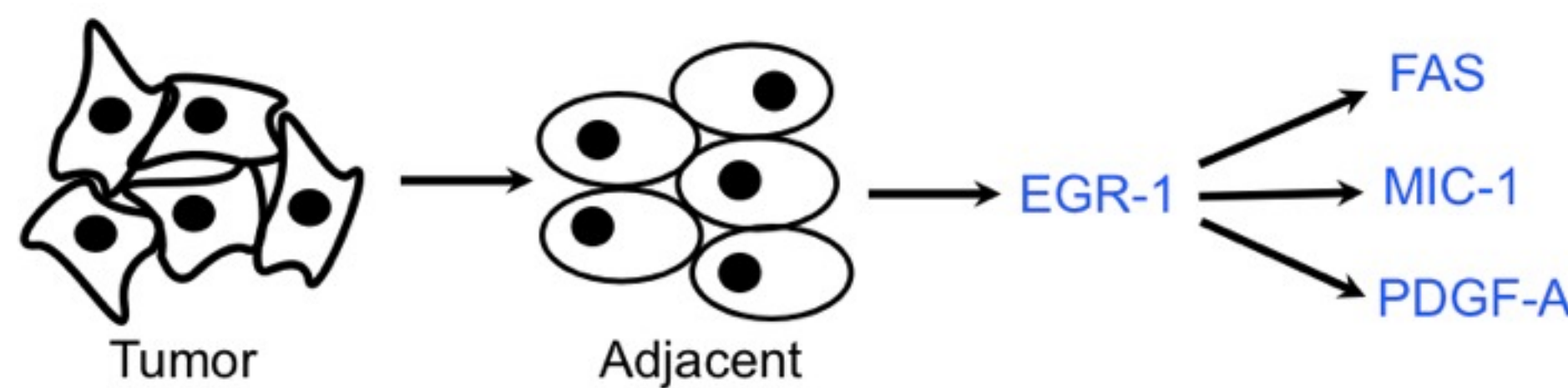


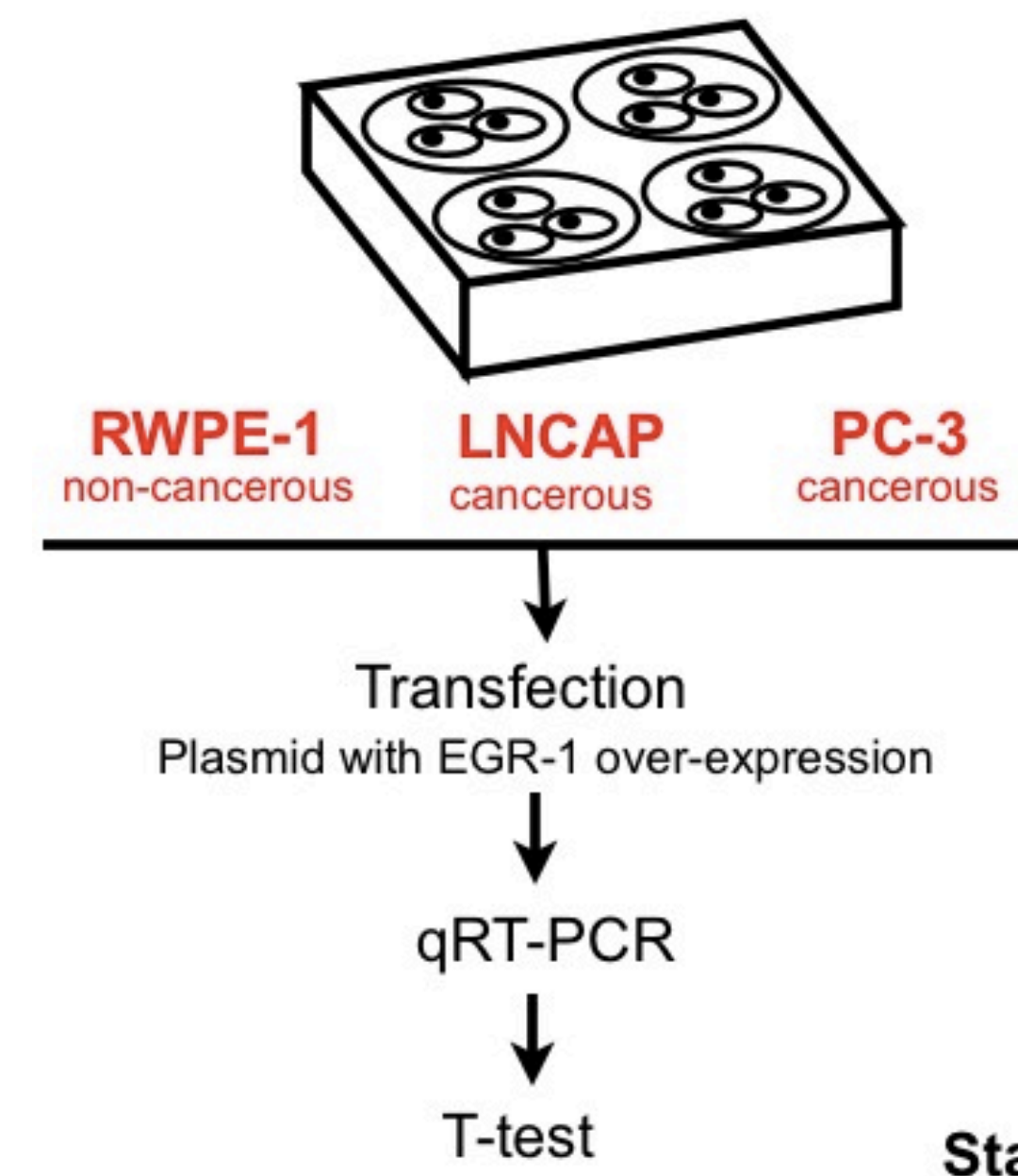
Figure 4. Tissues adjacent to tumors may undergo morphological changes leading to molecular alterations that are in complete absence of any cytological or histological change. These molecular alterations can involve changes in expression for several protein factors: early growth response 1 (EGR-1), the lipogenic enzyme fatty acid synthase (FAS), and the secreted growth factors platelet derived growth factor A (PDGF-A) and macrophage inhibitory cytokine 1 (MIC-1). As a key transcription factor, we hypothesize EGR-1 is a master regulator of FAS, MIC-1, and PDGF-A.

REFERENCES

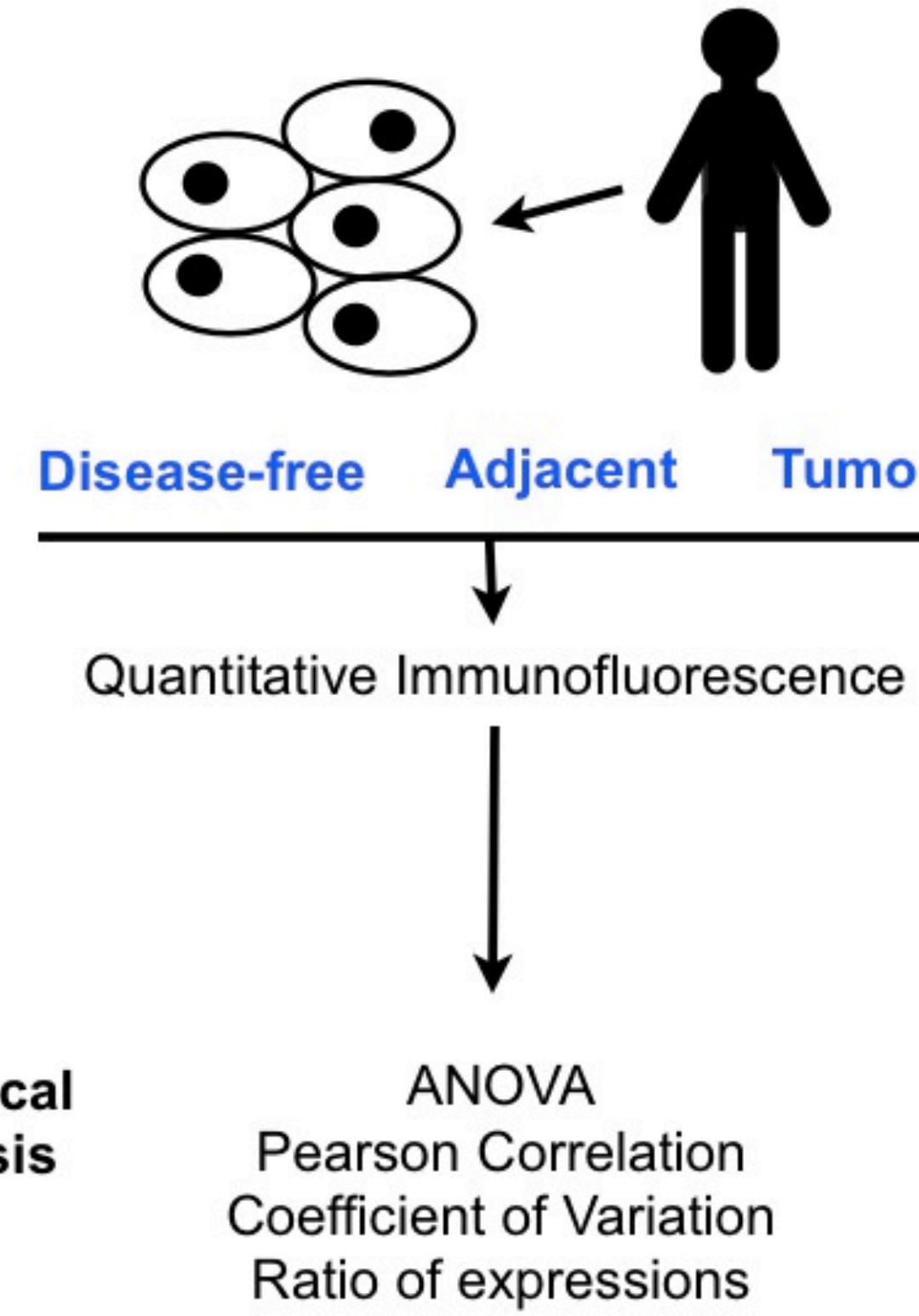
1. American Cancer Society. Cancer Facts & Figures 2015. Atlanta: American Cancer Society; 2015.
2. Andreou M, Cheng T (2010) Multifocal prostate cancer: biologic, prognostic, and therapeutic implications. Human Pathology 41(6): 781-793.
3. Halin S, Hammarsten P, Adamo H, Wilkstrom P, Bergh A (2011) Tumor indicating normal tissue could be a new source of diagnostic and prognostic markers for prostate cancer. Expert Opinion Medicine Diagnosis 5(1):37-47.
4. Dakubo GD, Jakupciak JP, Birch-Machin MA, Parr RL (2007) Clinical implications and utility of field effect. Cancer Cell International 7:2.
5. Jones A, Trujillo K, Phillips G, Fleet T, Murtun J, Severns V, Shah S, Davis M, Smith A, Griffith J, Fischer E, and Bisoffi M (2011) Early growth response 1 and fatty acid synthase expression is altered in tumor adjacent prostate tissue and indicates field cancerization. Prostate 72: 1159-1170.
6. Jones A, Kresta A, Jenkins S, Janos S, Overton H, Shoshan D, Fischer E, Trukilo K, and Bisoffi M (2015) Prostate Field Cancerization: Deregulated Expression Of Macrophage Inhibitory Cytokine 1 (MIC-1) And Platelet Derived Growth Factor A (PDGF-A) In Tumor Adjacent Tissue. Plos ONE 10:3: 1-14

METHODS

Cell Models



Human Tissues



Statistical Analysis

ANOVA
Pearson Correlation
Coefficient of Variation
Ratio of expressions

RESULTS: Human Tissues

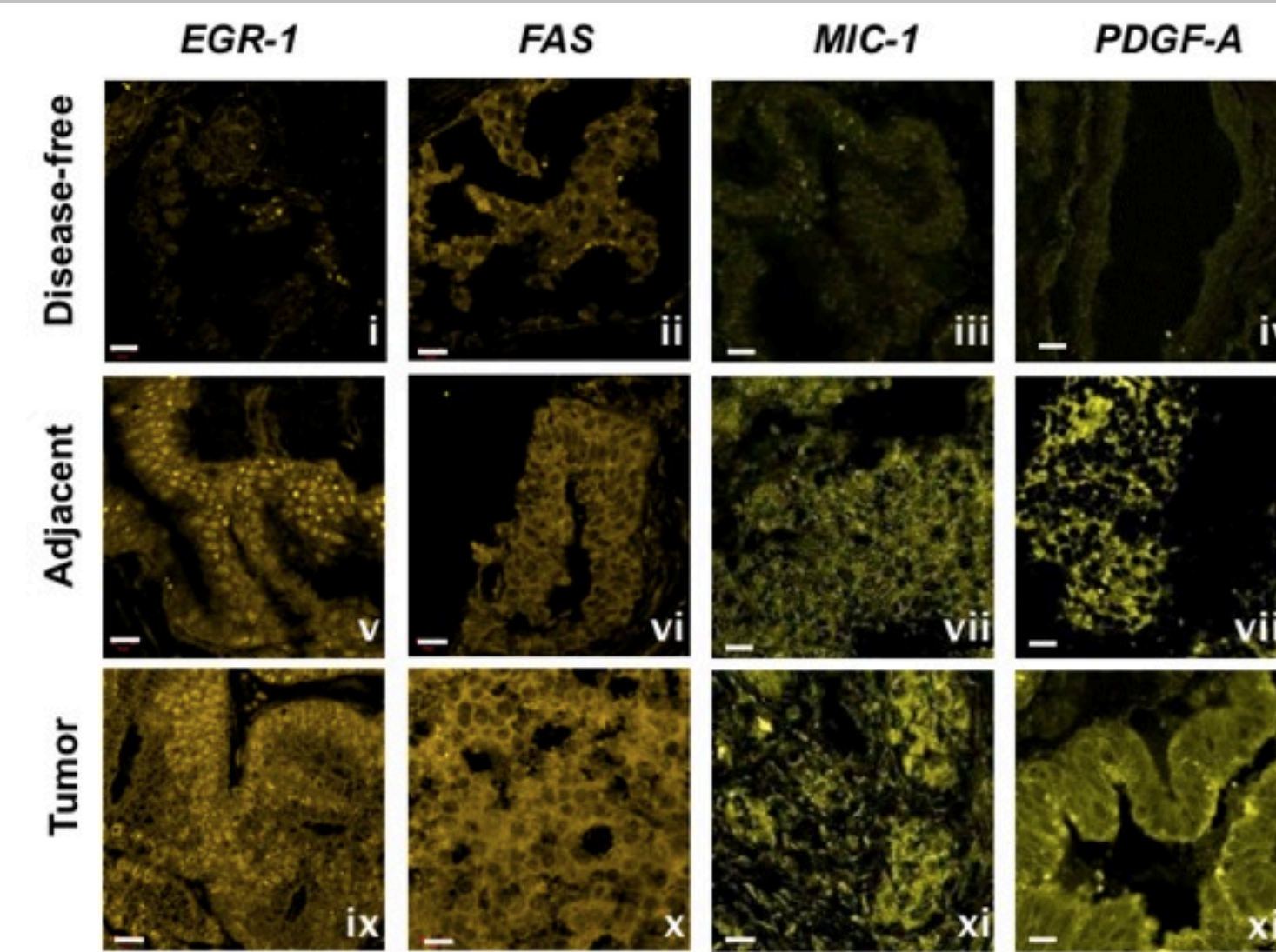


Figure 5. Representative immunofluorescence image.

• EGR-1, FAS, MIC-1, and PDGF-A have greater expression in adjacent tissue, which can be a molecular mechanism of field cancerization

• Ratio of either FAS, MIC-1, and PDGF-A to EGR-1 expression

• High ratios suggest a potential regulatory role of EGR-1

• EGR-1 is regulator of FAS, MIC-1, and PDGF-A expression

• Ratio of MIC-1 to EGR-1 expression increased significantly in adjacent and tumor tissues (p<0.05)

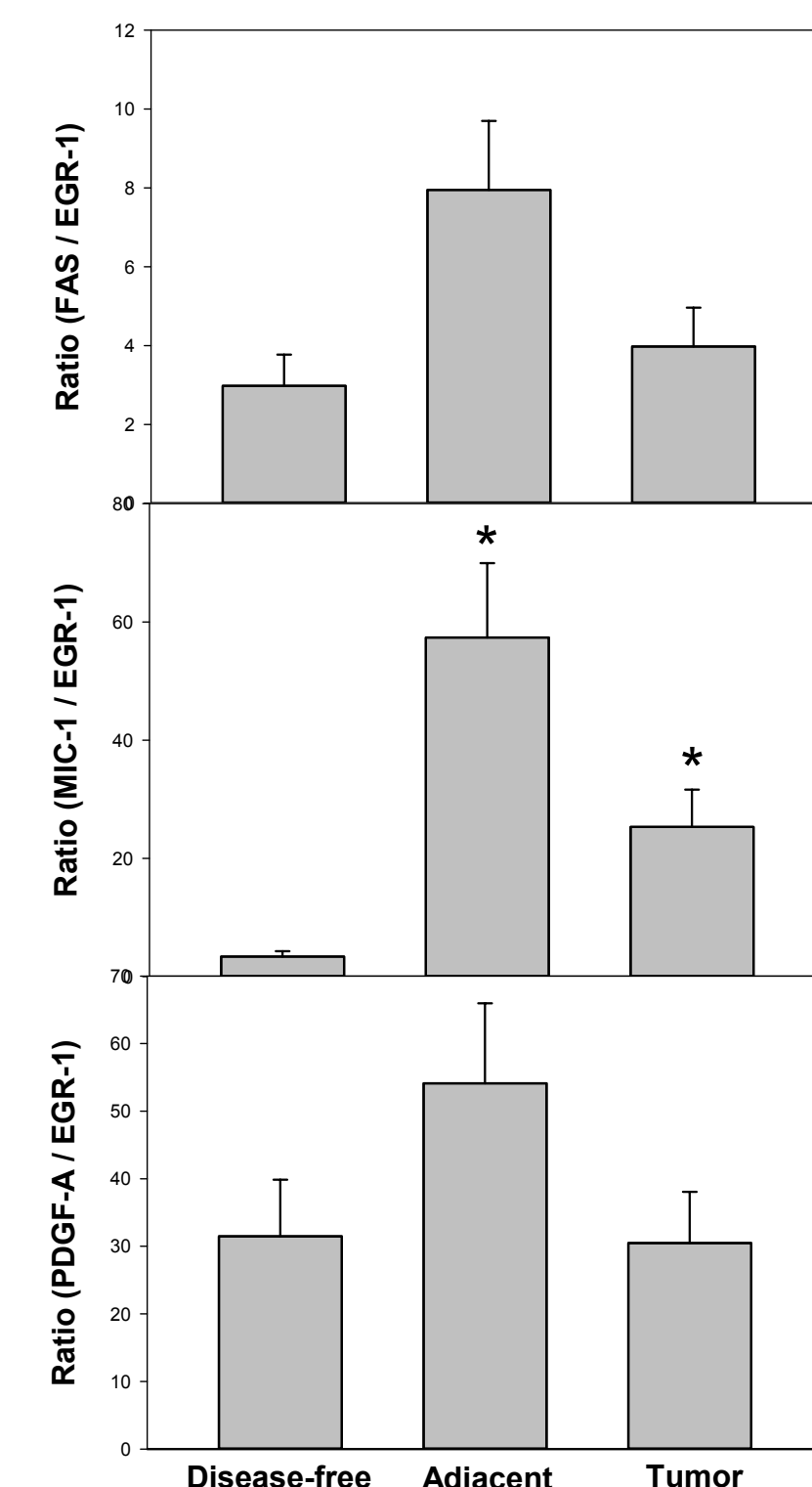


Figure 6. The ratio of either FAS, MIC-1, or PDGF-A to EGR-1 expression in disease-free compared to adjacent and tumor tissues determined a potential regulatory function of EGR-1.

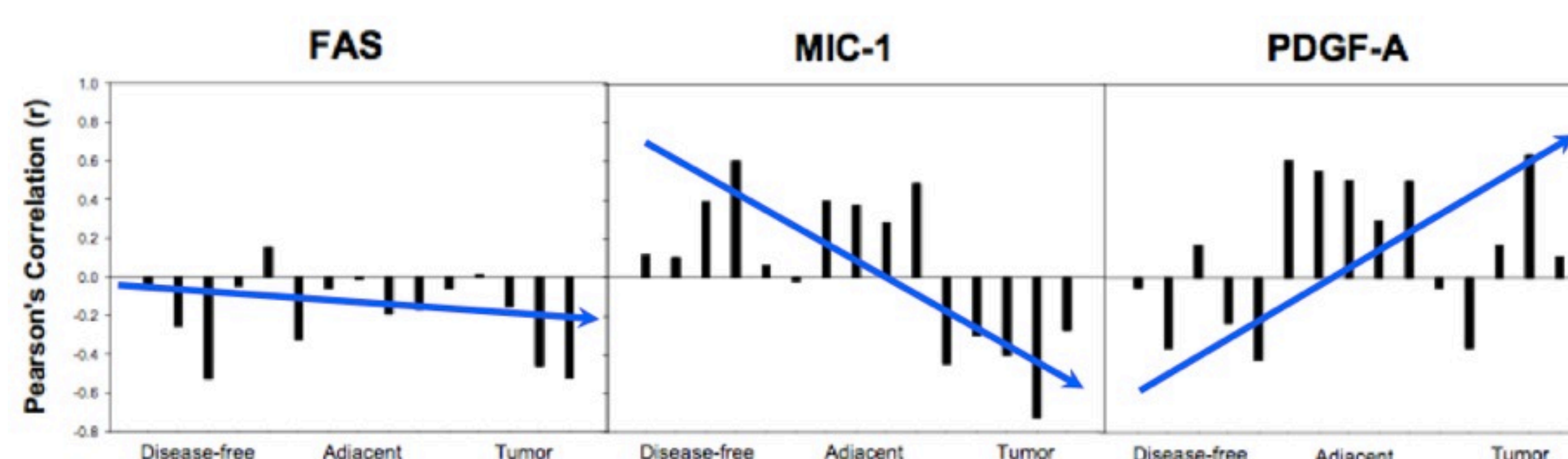


Figure 7. Pearson's correlation (r) shows the association between high EGR-1 expression and FAS, MIC-1, and PDGF-A expression in disease-free, adjacent, and tumor tissues. General trends of EGR-1 regulation of FAS, MIC-1, and PDGF-A expression are represented by blue arrows.

RESULTS: Cell Models

• EGR-1 is a regulator of FAS, MIC-1, and PDGF-A expression

• EGR-1 down-regulated FAS and MIC-1 expression by 70% and 30% in PC-3 cells (p=0.005, p=0.015)

• EGR-1 up-regulated PDGF-1 expression by 110-fold in PC-3 cells (p=0.004)

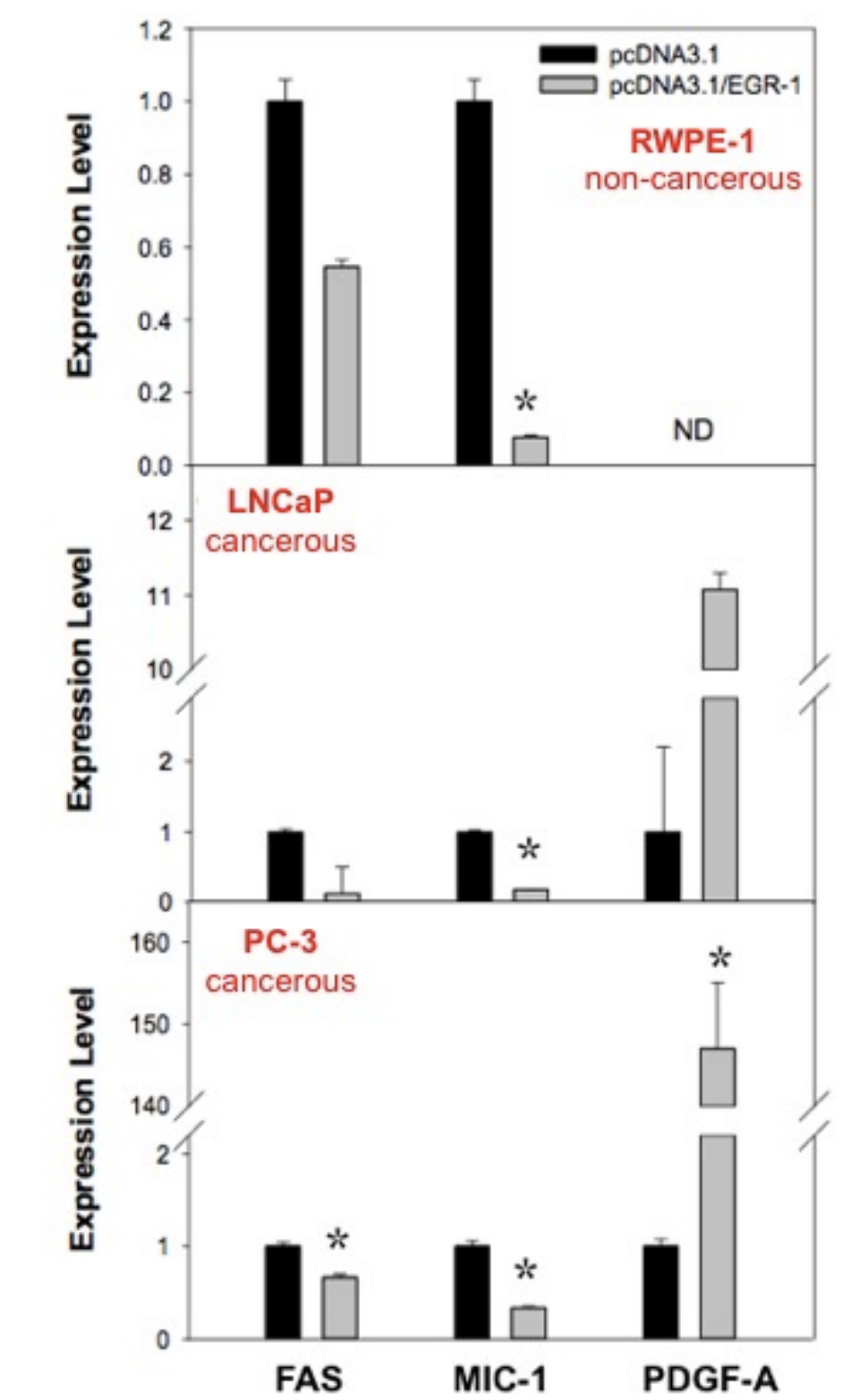


Figure 8. qRT-PCR results show the effect of EGR-1 over expression on FAS, MIC-1, PDGF-A mRNA expression in cell models: RWPE-1, LNCaP, and PC-3.

SUMMARY

	Cell Models			Human Tissues		
	RWPE-1 Non-cancerous	LNCaP Cancerous	PC-3 Cancerous	Disease-Free	Adjacent	Tumor
FAS			70% p=0.005			r=0.66 p=0.043
MIC-1	10% p=0.004	20% p=0.0007	30% p=0.015			r=0.78 p=0.008
PDGF-A			110-fold p=0.004		r=0.59 p=0.01	r=0.9 p=0.004

CONCLUSIONS

• EGR-1 is regulator of FAS, MIC-1, and PDGF-A expression

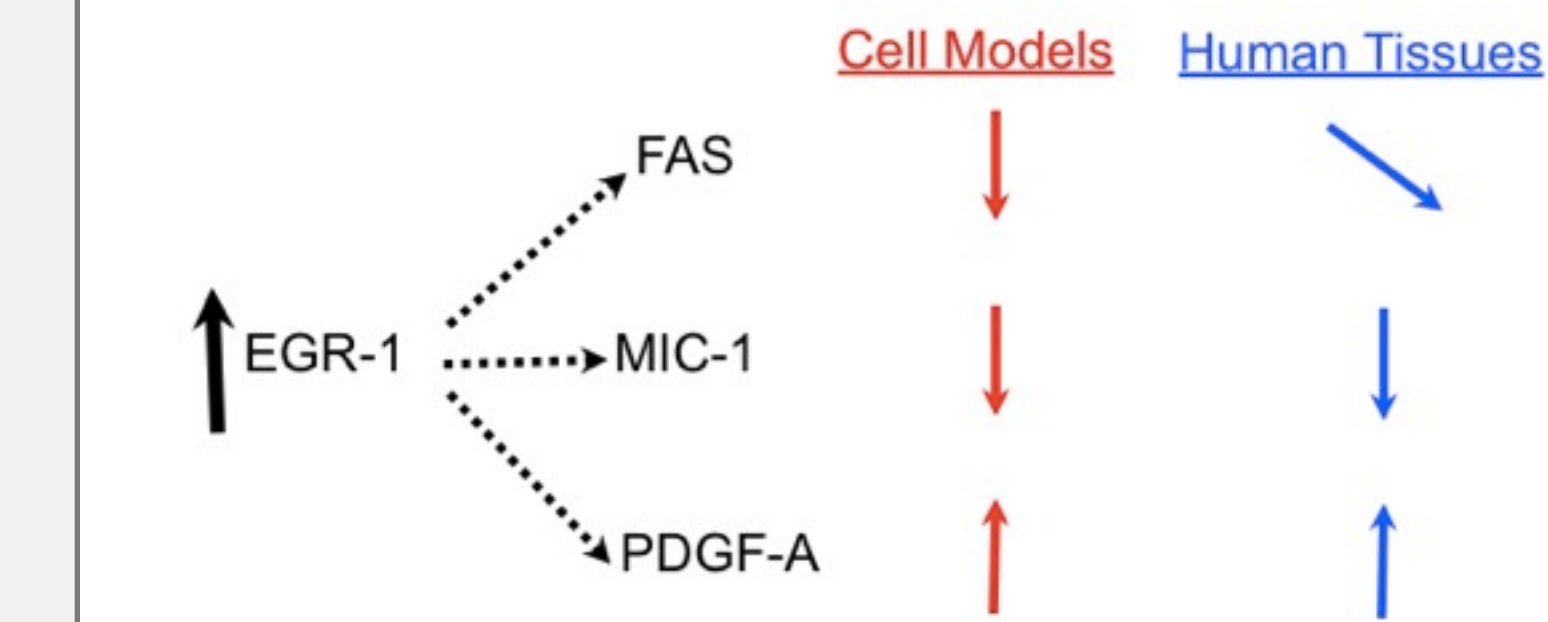


Figure 9. Elevated EGR-1 expression results in up-regulated FAS and MIC expression and down-regulated PDGF-A expression in cell models and human tissues. Vertical arrows indicated strong regulation, while slanted arrows represent moderate regulation.

• This novel analysis between cell models and human tissues is helpful identifying pathways in prostate field cancerization

• EGR-1, FAS, MIC-1, and PDGF-A are markers that can lead to improvements in prostate field cancerization

ACKNOWLEDGEMENTS

We would like to thank Chapman University Schmid College of Science and Technology and Chapman University Office of Undergraduate Research for administrative support. Financial support was provided from the Undergraduate Student Scholarly/Creative Grant from the Office of Undergraduate Research and grants from the National Institutes of Health. We would like to thank Emily Frisch and Dori Shoshan for helping to establish the Cancer Biology Laboratory. We would also like to thank Anna Jones for generating the prostate tissue expression data. Special thanks to the patients that donated prostate tissue!